

## **ADDENDUM #2**

Date: September 23, 2024

This Addendum applicable to work designated herein shall be understood to be and is an Addendum and as such shall be part of and included in the Contract.

To all bidders for furnishing all labor and materials necessary for:

**DPW PROJECT NO. 20-232  
ISU CUSTODIAL OFFICE REMODEL PHASE I  
IDAHO STATE UNIVERSITY  
POCATELLO, IDAHO**

Failure to acknowledge receipt of this Addendum on the bid proposal form may result in rejection of your bid.

## **ARCHITECTURAL ITEMS**

1. Specification Section 09300 has been added to the Project Manual, see attached.
2. Delete 4" rubber base from wall section located below drinking fountain. Wall tile located behind drinking fountain to extend to floor. The entire perimeter of the tile work (wall and floor) is to receive a stainless steel edge profile by Schluter, see attached sheet A2.2.

### **List of sheets included:**

**Specification Section 09300  
A2.2 Exterior Elevations - REVISED**

**END OF ADDENDUM NO. 2**

DPW Project No. 20-232  
 Idaho State University  
 Custodial Office Remodel-Bldg. 24  
 Pocatello, Idaho

## SECTION 09 3000 - TILING

### PART 1 - GENERAL

#### 1.1 SUMMARY

- A. Section Includes:
1. Ceramic tile.
  2. Porcelain tile.

#### 1.2 ACTION SUBMITTALS

- A. Product Data: For each type of product indicated.
- B. Samples:
1. Each type and composition of tile and for each color and finish required.
  2. Assembled samples, with grouted joints, for each type and composition of tile and for each color and finish required.

### PART 2 - PRODUCTS

#### 2.1 TILE PRODUCTS

- A. ANSI Ceramic Tile Standard: Provide Standard grade tile that complies with ANSI A137.1 for types, compositions, and other characteristics indicated.
- A. Tile Type: Wall Tile.
1. Basis of Design Product: Subject to compliance with requirements, provide Dal tile, Rittenhouse Square, 3" x 6" or equal as approved by Architect.
  2. Colors:
    - a. Wainscot: White 0100.
  3. Grout Color: As selected by Architect from manufacturer's full range.
  4. Trim Units: Coordinated with sizes and coursing of adjoining flat tile where applicable. Provide shapes as follows, selected from manufacturer's standard shapes:
    - a. Internal Corners: Field-buttet square corners.
    - b. Bullnose Trim: Schluter -RONDEC, stainless steel.

- B. Tile Type: Floor Tile.
1. Basis of Design Product: Subject to compliance with requirements, provide American Olean Color Story Floor or equal as approved by Architect.
  2. Colors:
    - a. Matte Storm Gray 0017
  3. Grout Color: As selected by Architect from manufacturer's full range.

#### 2.2 SETTING MATERIALS

- A. Latex-Portland Cement Mortar (Thin Set): ANSI A118.4.
1. Manufacturers: Subject to compliance with requirements, provide products by one of the following:
    - a. Bonsal American; an Oldcastle company.
    - b. Bostik, Inc.
    - c. Laticrete International, Inc.
    - d. MAPEI Corporation.
    - e. Mer-Kote Products, Inc.
    - f. Summitville Tiles, Inc.
    - g. TEC; a subsidiary of H. B. Fuller Company.
  2. Prepackaged, dry-mortar mix combined with liquid-latex additive.
  3. For wall applications, provide nonsagging mortar.

DPW Project No. 20-232  
 Idaho State University  
 Custodial Office Remodel-Bldg. 24  
 Pocatello, Idaho

### 2.3 GROUT MATERIALS

- A. Polymer-Modified Tile Grout: ANSI A118.7.
1. Basis-of-Design Product: Subject to compliance with requirements, provide Mapei Keracolor U for unsanded joints less than 1/8 inch or Mapei Keracolor S for joints greater than 1/8 inch or comparable product by one of the following:
    - a. Bonsal American; an Oldcastle company.
    - b. Bostik, Inc.
    - c. Laticrete International, Inc.
    - d. MAPEI Corporation.
    - e. Summitville Tiles, Inc.
    - f. TEC; a subsidiary of H. B. Fuller Company.
  2. Polymer Type: Liquid-latex form for addition to prepackaged dry-grout mix.

### 2.4 ELASTOMERIC SEALANTS

- A. One-Part, Mildew-Resistant Silicone Sealant: ASTM C 920; Type S; Grade NS; Class 25; Uses NT, G, A, and, as applicable to nonporous joint substrates indicated, O; formulated with fungicide, intended for sealing interior ceramic tile joints and other nonporous substrates that are subject to in-service exposures of high humidity and extreme temperatures.
1. Products: Subject to compliance with requirements, available products that may be incorporated into the Work include, but are not limited to, the following:
    - a. Dow Corning Corporation; Dow Corning 786.
    - b. GE Silicones, a division of GE Specialty Materials; Sanitary 1700.
    - c. Laticrete International, Inc.; Latasil Tile & Stone Sealant.
    - d. Pecora Corporation; Pecora 898 Sanitary Silicone Sealant.
    - e. Tremco Incorporated; Tremsil 600 White.

### 2.5 MISCELLANEOUS MATERIALS

- A. Trowelable Underlayments and Patching Compounds: Latex-modified, portland cement-based formulation provided or approved by manufacturer of tile-setting materials for installations indicated.
- B. Grout Sealer: Manufacturer's standard product for sealing grout joints and that does not change color or appearance of grout.
1. Products: Subject to compliance with requirements, provide one of the following:
    - a. Bonsal American, an Oldcastle company; Grout Sealer.
    - b. Bostik, Inc.; CeramaSeal Grout & Tile Sealer.
    - c. C-Cure; Penetrating Sealer 978.
    - d. Custom Building Products; Surfaceguard Sealer.
    - e. Jamo Inc.; Penetrating Sealer.
    - f. MAPEI Corporation; KER 003, Silicone Spray Sealer for Cementitious Tile Grout.
    - g. Southern Grouts & Mortars, Inc.; Silicone Grout Sealer.
    - h. Summitville Tiles, Inc.; SL-15, Invisible Seal Penetrating Grout and Tile Sealer.
    - i. TEC, a subsidiary of H. B. Fuller Company; TA-256 Penetrating Silicone Grout Sealer.

## PART 3 - EXECUTION

### 3.1 EXAMINATION

- A. Examine substrates, areas, and conditions where tile will be installed, with Installer present, for compliance with requirements for installation tolerances and other conditions affecting performance of installed tile.
1. Verify that substrates for setting tile are firm, dry, clean, free of coatings that are incompatible with tile-setting materials including curing compounds and other substances that contain soap, wax, oil, or silicone; and comply with flatness tolerances required by ANSI A108.01 for installations indicated.

### 3.2 PREPARATION

- A. Fill cracks, holes, and depressions in concrete substrates for tile floors installed with thin-set mortar with trowelable leveling and patching compound specifically recommended by tile-setting material manufacturer.
- B. Where indicated, prepare substrates to receive waterproofing by applying a reinforced mortar bed that complies with ANSI A108.1A and is sloped 1/4 inch per foot toward drains.
- C. Blending: For tile exhibiting color variations, use factory blended tile or blend tiles at Project site before installing.
- D. Field-Applied Temporary Protective Coating: If indicated under tile type or needed to prevent grout from staining or adhering to exposed tile surfaces, precoat them with continuous film of temporary protective coating, taking care not to coat unexposed tile surfaces.

### 3.3 INSTALLATION

- A. Comply with TCA's "Handbook for Ceramic Tile Installation" for TCA installation methods specified in tile installation schedules. Comply with parts of the ANSI A108 Series "Specifications for Installation of Ceramic Tile" that are referenced in TCA installation methods, specified in tile installation schedules, and apply to types of setting and grouting materials used.
- B. Extend tile work into recesses and under or behind equipment and fixtures to form complete covering without interruptions unless otherwise indicated. Terminate work neatly at obstructions, edges, and corners without disrupting pattern or joint alignments.
- C. Accurately form intersections and returns. Perform cutting and drilling of tile without marring visible surfaces. Carefully grind cut edges of tile abutting trim, finish, or built-in items for straight aligned joints. Fit tile closely to electrical outlets, piping, fixtures, and other penetrations so plates, collars, or covers overlap tile.
- D. Provide manufacturer's standard trim shapes where necessary to eliminate exposed tile edges.
- E. Jointing Pattern: Lay tile in grid pattern unless otherwise indicated. Lay out tile work and center tile fields in both directions in each space or on each wall area. Lay out tile work to minimize the use of pieces that are less than half of a tile. Provide uniform joint widths unless otherwise indicated.
- F. Joint Widths: Unless otherwise indicated, install tile with the following joint widths:
  - 1. Glazed Wall Tile: 1/16 inch.
- G. Expansion Joints: Provide expansion joints and other sealant-filled joints, including control, contraction, and isolation joints, where indicated. Form joints during installation of setting materials, mortar beds, and tile. Do not saw-cut joints after installing tiles.
  - 1. Where joints occur in concrete substrates, locate joints in tile surfaces directly above them.
  - 2. Prepare joints and apply sealants to comply with requirements in Section 07 9200 "Joint Sealants."
- H. Install waterproofing to comply with ANSI A108.13 and manufacturer's written instructions to produce waterproof membrane of uniform thickness and bonded securely to substrate.

### 3.4 INTERIOR TILE INSTALLATION SCHEDULE

- A. Interior Wall Installations, Wood Studs or Furring:
  - 1. Tile Installation W245: Thin-set mortar on coated glass-mat, water-resistant gypsum backer board; TCA W245.
    - a. Tile Type: Wall tile.
    - b. Thin-Set Mortar: Latex- portland cement mortar.
    - c. Grout: Polymer-modified unsanded grout.

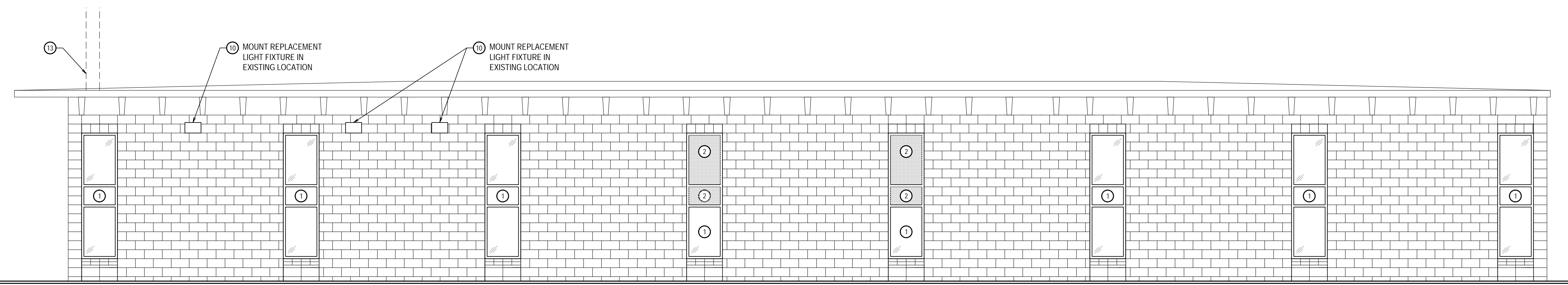
**END OF SECTION 09 3000**

REVISIONS		
2	9/19/2024	ADDENDUM #2

NBW PROJECT NO.: 19032  
DATE: MARCH 2024  
DRAWN BY: KP  
CHECKED BY: JHW

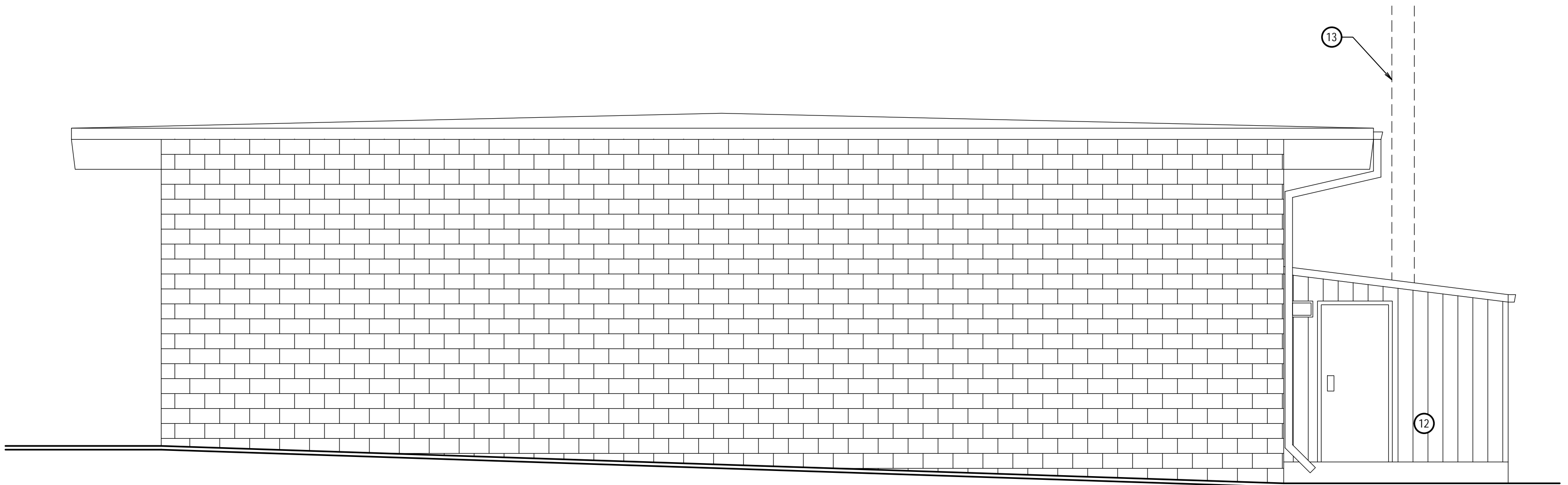
DRAWING NO:

**A2.2**

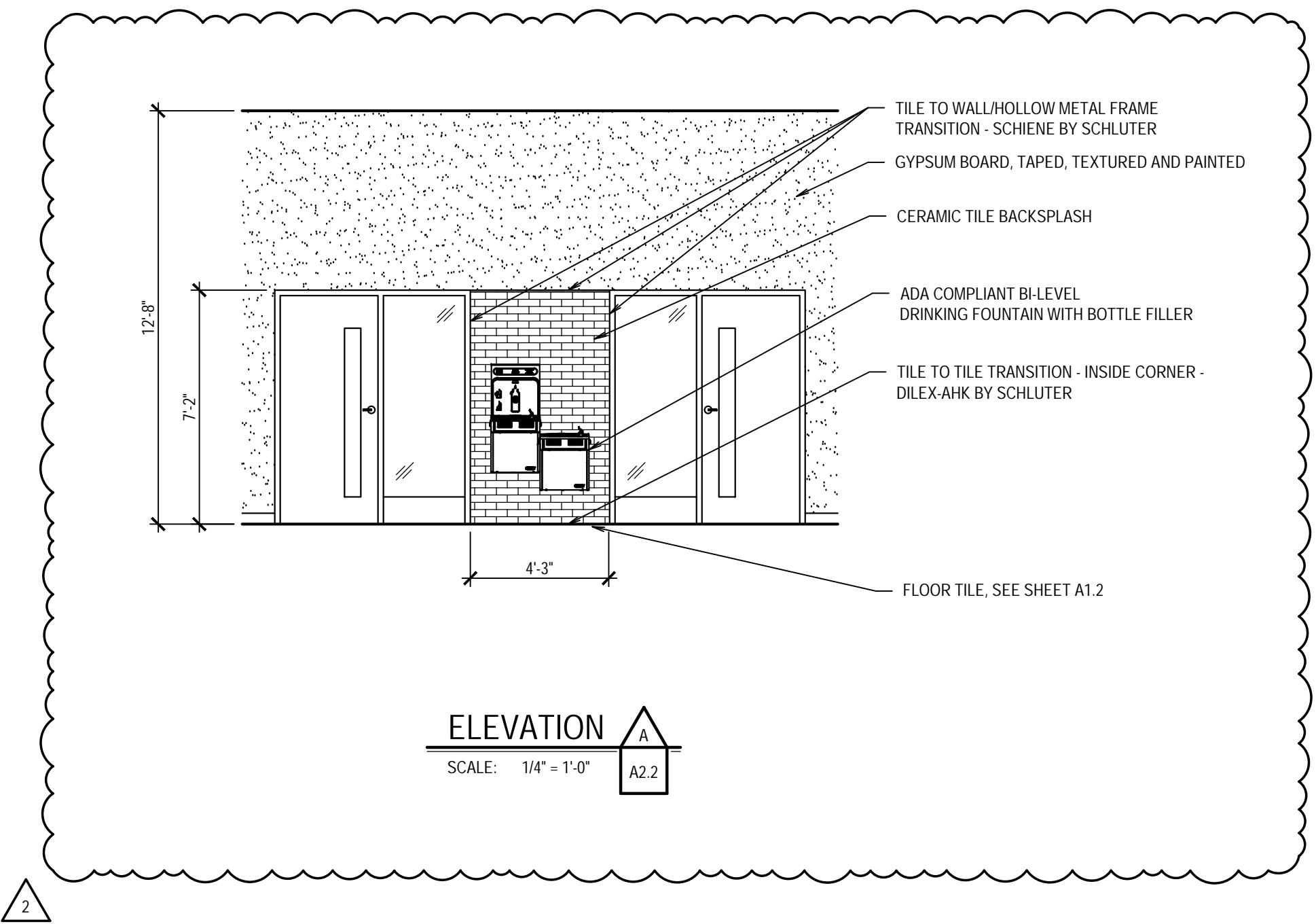


**NORTH ELEVATION**  
SCALE: 1/4" = 1'-0"

ALTERNATE NO.1 ALTERNATE NO.1 ALTERNATE NO.1 ALTERNATE NO.1



**WEST ELEVATION**  
SCALE: 1/4" = 1'-0"



**ELEVATION**  
SCALE: 1/4" = 1'-0"  
A2.2

**KEYNOTES**

1. NEW WINDOW	11. SAND, PREPARE AND PAINT EXISTING HOLLOW METAL DOOR, FRAME AND WOOD SIDING
2. 1" THICK SPANDREL GLAZING	12. EXISTING LEAN-TO STRUCTURE, EXCLUDED FROM WORK.
3. CMU INFILL, MATCH EXISTING ADJACENT CMU	13. EXISTING POWER POLE, PROTECT DURING CONSTRUCTION
4. POWER WASH EXISTING OVERHEAD DOOR, EXTERIOR ONLY	
5. NEW ALUMINUM STOREFRONT SYSTEM	
6. EXISTING CONCRETE HEADER	
7. NEW HOLLOW METAL DOOR AND FRAME, SEE DETAIL, DIA4.1, PAINT.	
8. REMOVE EXISTING METAL COVERS AND DUCTS. PATCH CMU WALL PENETRATIONS BY INSTALLING BATT INSULATION IN CAVITY AND GALVANIZED SHEET METAL COVER OVER THE TOP OF HOLES.	
9. REMOVE EXISTING HOSE BIB, FILL HOLE WITH INSULATION AND COVER WITH STAINLESS STEEL PLATE	
10. NEW LIGHT FIXTURE	