

## **ADDENDUM #1**

Date: May 6, 2021

This Addendum applicable to work designated herein shall be understood to be and is an Addendum and as such shall be part of and included in the Contract.

To all bidders for furnishing all labor and materials necessary for:

### **DPW 21609 IDVS: WALL PROTECTORS/GUARDS, VET-P POCATELLO, ID NBW#21004**

Failure to acknowledge receipt of this Addendum on the bid proposal form may result in rejection of your bid.

Addendum consists of: 1 page. Attached Documents consist of – Pre-bid Conference Agenda, Pre-bid Conference Signup Sheet, Sheet A1.3, Sheet A1.4, Sheet A1.5, Existing Conditions Photo Sheet

### **GENERAL ITEMS**

1. Attached is a sheet of photos depicting the typical existing conditions.

### **ARCHITECTURAL ITEMS**

1. Sheet A1.3
  - a. See attached revised sheet.
2. Sheet A1.4
  - a. See attached revised sheet.
3. Sheet A1.5
  - a. See attached revised sheet.

END OF ADDENDUM NO.1

## Pre-bid Conference

May 05, 2021 – 1:00pm MST

### DPW 21609 IDVS: Wall Protectors/Guards, VET-P

<b>Architect's Project Manager:</b> Nick Hansen Phone - 208-522-8779 Email - nrh@nbwarchitects.com	<b>Project description:</b> Demolition of existing handrails, wall bumpers, wall base and wall covering. New handrails, wall bumpers, wall base and wall covering and paint and repair.	
<b>DPW Project Manager</b> Kelly Berard Phone - 208-332-1938	<b>Pocatello Veterans Home Representative</b> Cornell Bruce Phone - 208-235-7800 Email - cornell.bruce@veterans.idaho.gov	
<b>Building square footage:</b> N/A <b>Site Area:</b> N/A	<b>Bid submission date and time:</b> May 18 <sup>th</sup> , 2021 2:00 PM MST	<b>Bid submission location:</b> DPW Field Office, 611 Wilson Avenue, Suite 1, Pocatello, Idaho 83201
<b>Building permit issued by:</b> DBS	<b>Construction Time:</b> 140 Calendar Days	<b>Liquidated damages/ day:</b> \$250.00
<b>Unusual conditions:</b> There are COVID 19 protocols in place. Please reference Project Manual Section 01 1000 1.19. Work shall not proceed on both sides of any one hallway at the same time. The work must be staged such that a minimum of one side of each hallway is always accessible to the residents. Please reference Project Manual Section 01 1000 1.7.		

1. **Bidders List:**
  - a. Ormond Builders Inc.
  - b. Alpine Construction Management
  
2. **Bidding Information:**
  - a. This project is subject to Davis Bacon. The successful bidder must comply with all Davis Bacon requirements.
  - b. The successful bidder must register with the Federal System for Award Management.
  - c. A Public Works Contractors License for the State of Idaho is required to bid on this work.
  
3. **Addenda:**
  - a. All addenda will be issued by the Architect, by email, at least four (4) days prior to bid opening.
  - b. All verbal agreements or instructions must be confirmed by written addenda.
  - c. Contractors are to bid the contract documents. Review documents carefully. Additional



Members of the American Institute of Architects



payments to the Contractor will not be made for items shown or specified in documents.  
d. Requests for clarification shall be in writing and received by the architect ten (10) calendar days minimum prior to bid opening.

4. **Bid Opening:**

- a. Sealed bids will be accepted up to the specified time. Bidding will be closed at the exact specified time. Bids will be opened and reviewed in a meeting following the time for receipt of bids.
- b. Bids are to be submitted as outlined in the Project Manual.
- c. The bid form used will be the form provided. Faxed bids are not acceptable.
- d. The Owner reserves the right to reject any or all bids and to waive any irregularity therein.
- e. If all addenda are not acknowledged by number (1,2,3, etc.), on the bid form or if the bid form is not signed, all blanks not filled in or otherwise improperly filled out, the bid will be considered non-responsive.
- f. The bid amount is to be listed in both written and numerical form. If there is a discrepancy between the two, the written amount will be used.

5. **Additional Items of Discussion:**

- a. No substitutions of materials or products not authorized by addendum.
- b. Spraying of paint is not allowed. All paint must be applied by means of a roller and brush.
- c. For downloading documents: [www.nbwarchitects.com](http://www.nbwarchitects.com)  
Click on "Current Bidding Projects"
- d. The finish for the walls below the chair rail is to be a level 5 to match the wall above. Contractor to verify prior to commencing work.
- e. Proof of vaccination is not required.
- f. The DPW Field Representative Nathan Powers will be in his office starting at 12pm on May 18<sup>th</sup>. Bids are due by 2pm.



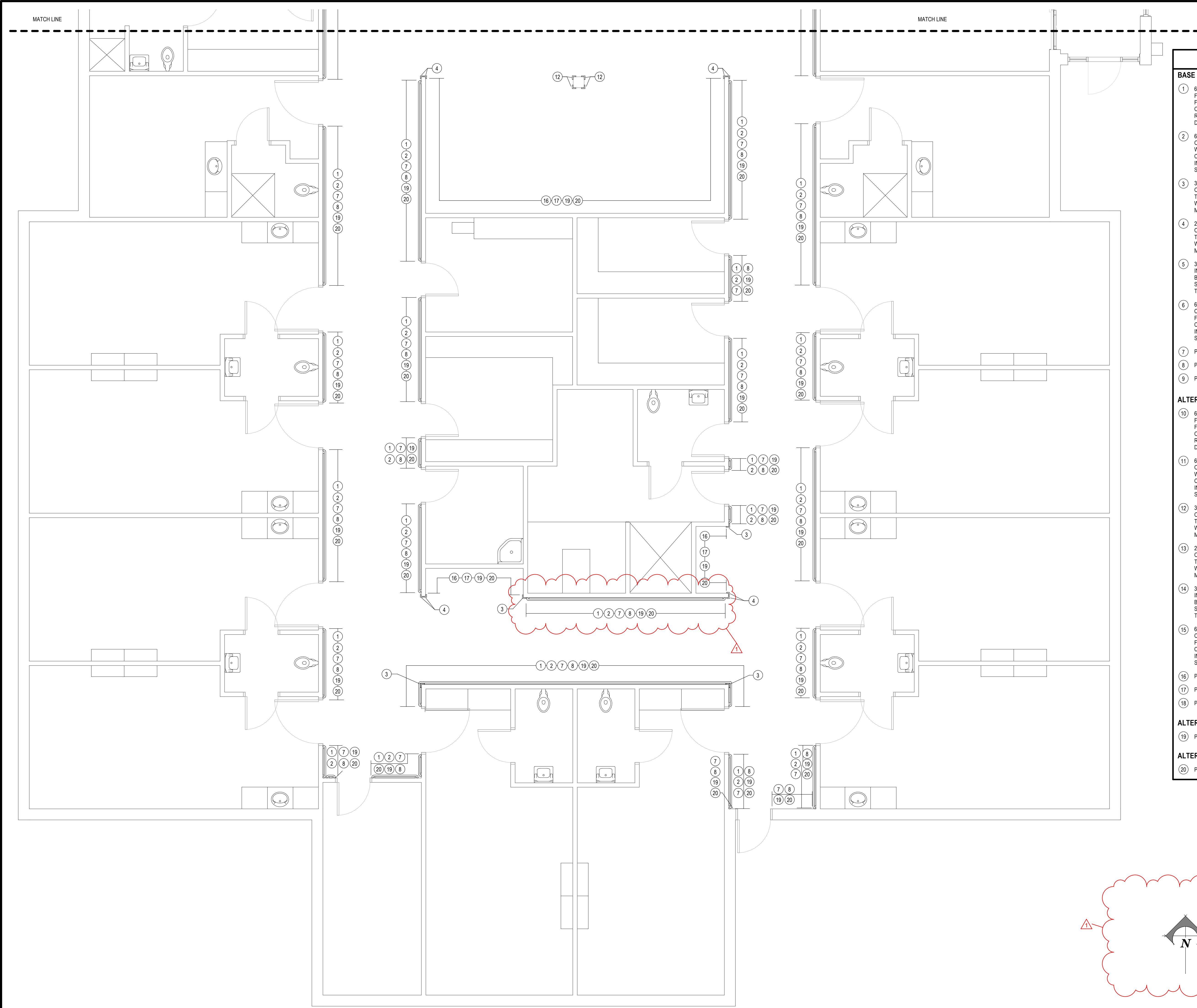
Members of the American Institute of Architects



## Pre-Bid Conference Sign-in Sheet

**Project Name: DPW 21609 IDVS: Wall Protectors/Guards, VET-P**  
**All attendees joined via remote video conference.**

In Attendance:	Company:	Contact:
1. Kelly Berard	DPW	208-332-1938
2. Margie Kennedy	DPW	208-332-1917
3. Nick Hansen	NBW Architects	208-522-8779
4. James Wyatt	NBW Architects	208-522-8779
5. Nathan Powers	DPW	208-244-3796
6. Cornell Bruce	Pocatello Veterans Home	208-235-7800
7. Nick Contos	Ormond Builders	ncontos@ormondbuilders.com
8. Matthew Ineck	Alpine Construction Management	mineck@alpineconstructionmanagement.com
9.		
10.		
11.		
12.		
13.		
14.		
15.		



**KEYNOTES**

**BASE BID**

- 1 6" HANDRAIL. MOUNT WITH TOP OF GRIPPING SURFACE AT MIN. 34" ABOVE FINISH FLOOR. INSTALL MOUNTING BRACKETS SECURELY INTO WALL FRAMING OR SOLID BLOCKING. INSTALL CONTINUOUS CORNER AT ALL OUTSIDE CORNERS. AT ALL INSIDE CORNERS AND TERMINATIONS, RETURN HANDRAIL TO WALL. SEE 2/A1.4 FOR TYPICAL CORNER MOUNTING DETAIL.
- 2 6" CRASH RAIL AND CONTINUOUS ALUMINUM RETAINER. MOUNT BOTTOM OF CRASH RAIL TIGHT TO TOP OF WALL BASE. FASTEN SECURELY INTO WALL FRAMING OR SOLID BLOCKING. PROVIDE CONTINUOUS OUTSIDE CORNERS. MITER ALL INSIDE CORNERS. AT TERMINATIONS OR INTERRUPTIONS RETURN CRASH RAIL TO WALL WITH OUTSIDE CORNERS. SEE 2/A1.4 FOR TYPICAL CORNER MOUNTING DETAIL.
- 3 3" CORNER GUARD ON CONTINUOUS ALUMINUM RETAINER. INSTALL TOP OF CORNER GUARD AT 48" ABOVE FINISH FLOOR. KEEP BOTTOM TIGHT TO TOP OF WALL BASE OR CRASH RAIL. FASTEN RETAINER SECURELY INTO WALL FRAMING OR SOLID BLOCKING. SEE 2/A1.4 FOR TYPICAL CORNER MOUNTING DETAIL.
- 4 2" CORNER GUARD ON CONTINUOUS ALUMINUM RETAINER. INSTALL TOP OF CORNER GUARD AT 48" ABOVE FINISH FLOOR. KEEP BOTTOM TIGHT TO TOP OF WALL BASE OR CRASH RAIL. FASTEN RETAINER SECURELY INTO WALL FRAMING OR SOLID BLOCKING. SEE 2/A1.4 FOR TYPICAL CORNER MOUNTING DETAIL.
- 5 3" 135 DEGREE CORNER GUARD ON CONTINUOUS ALUMINUM RETAINER. INSTALL TOP OF CORNER GUARD AT 48" ABOVE FINISH FLOOR. KEEP BOTTOM TIGHT TO TOP OF WALL BASE OR CRASH RAIL. FASTEN RETAINER SECURELY INTO WALL FRAMING OR SOLID BLOCKING. SEE 2/A1.4 FOR TYPICAL CORNER MOUNTING DETAIL.
- 6 6" CRASH RAIL AND CONTINUOUS ALUMINUM RETAINER. MOUNT TOP OF CRASH RAIL AT 34" ABOVE FINISH FLOOR. FASTEN SECURELY INTO WALL FRAMING OR SOLID BLOCKING. PROVIDE CONTINUOUS OUTSIDE CORNERS. MITER ALL INSIDE CORNERS. AT TERMINATIONS OR INTERRUPTIONS RETURN CRASH RAIL TO WALL WITH OUTSIDE CORNERS. SEE 2/A1.4 FOR TYPICAL CORNER MOUNTING DETAIL.
- 7 PROVIDE AND INSTALL 4" RUBBER WALL BASE.
- 8 PAINT WALL BELOW THE EXISTING CHAIR RAIL.
- 9 PAINT WALL.

**ALTERNATE #1**

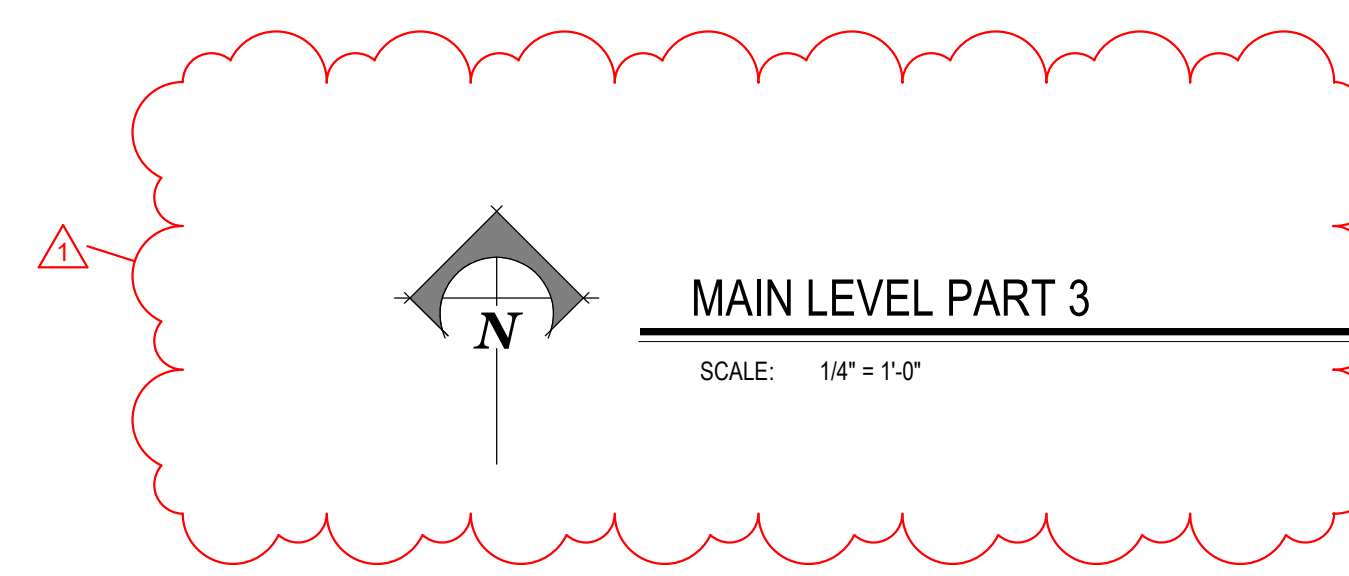
- 10 6" HANDRAIL. MOUNT WITH TOP OF GRIPPING SURFACE AT MIN. 34" ABOVE FINISH FLOOR. INSTALL MOUNTING BRACKETS SECURELY INTO WALL FRAMING OR SOLID BLOCKING. INSTALL CONTINUOUS CORNER AT ALL OUTSIDE CORNERS. AT ALL INSIDE CORNERS AND TERMINATIONS, RETURN HANDRAIL TO WALL. SEE 2/A1.4 FOR TYPICAL CORNER MOUNTING DETAIL.
- 11 6" CRASH RAIL AND CONTINUOUS ALUMINUM RETAINER. MOUNT BOTTOM OF CRASH RAIL TIGHT TO TOP OF WALL BASE. FASTEN SECURELY INTO WALL FRAMING OR SOLID BLOCKING. PROVIDE CONTINUOUS OUTSIDE CORNERS. MITER ALL INSIDE CORNERS. AT TERMINATIONS OR INTERRUPTIONS RETURN CRASH RAIL TO WALL WITH OUTSIDE CORNERS. SEE 2/A1.4 FOR TYPICAL CORNER MOUNTING DETAIL.
- 12 3" CORNER GUARD ON CONTINUOUS ALUMINUM RETAINER. INSTALL TOP OF CORNER GUARD AT 48" ABOVE FINISH FLOOR. KEEP BOTTOM TIGHT TO TOP OF WALL BASE OR CRASH RAIL. FASTEN RETAINER SECURELY INTO WALL FRAMING OR SOLID BLOCKING. SEE 2/A1.4 FOR TYPICAL CORNER MOUNTING DETAIL.
- 13 2" CORNER GUARD ON CONTINUOUS ALUMINUM RETAINER. INSTALL TOP OF CORNER GUARD AT 48" ABOVE FINISH FLOOR. KEEP BOTTOM TIGHT TO TOP OF WALL BASE OR CRASH RAIL. FASTEN RETAINER SECURELY INTO WALL FRAMING OR SOLID BLOCKING. SEE 2/A1.4 FOR TYPICAL CORNER MOUNTING DETAIL.
- 14 3" 135 DEGREE CORNER GUARD ON CONTINUOUS ALUMINUM RETAINER. INSTALL TOP OF CORNER GUARD AT 48" ABOVE FINISH FLOOR. KEEP BOTTOM TIGHT TO TOP OF WALL BASE OR CRASH RAIL. FASTEN RETAINER SECURELY INTO WALL FRAMING OR SOLID BLOCKING. SEE 2/A1.4 FOR TYPICAL CORNER MOUNTING DETAIL.
- 15 6" CRASH RAIL AND CONTINUOUS ALUMINUM RETAINER. MOUNT TOP OF CRASH RAIL AT 34" ABOVE FINISH FLOOR. FASTEN SECURELY INTO WALL FRAMING OR SOLID BLOCKING. PROVIDE CONTINUOUS OUTSIDE CORNERS. MITER ALL INSIDE CORNERS. AT TERMINATIONS OR INTERRUPTIONS RETURN CRASH RAIL TO WALL WITH OUTSIDE CORNERS. SEE 2/A1.4 FOR TYPICAL CORNER MOUNTING DETAIL.
- 16 PROVIDE AND INSTALL 4" RUBBER WALL BASE.
- 17 PAINT WALL BELOW THE EXISTING CHAIR RAIL.
- 18 PAINT WALL.

**ALTERNATE #2**

- 19 PROVIDE AND INSTALL CHAIR RAIL

**ALTERNATE #3**

- 20 PROVIDE AND INSTALL WALL COVERING



LICENSED ARCHITECT  
 ARCHITECT  
 4150201  
 JAMES WYATT  
 STATE OF IDAHO

**nbwarchitects.p.a.**  
 ARCHITECTURE / PLANNING / INTERIORS  
 KEVIN R. BODILY, A.I.A. JAMES H. WYATT, A.I.A. GEOFF L. NIELSON, A.I.A.  
 910 JOHN HODGINS PARKWAY / P.O. BOX 2212 / IDAHO FALLS, IDAHO 83403-2212  
 (P) 208-522-8779 (F) 208-522-8785 (W) nbwarchitects.com

PROJECT: **REMODEL FOR:  
 21-609 IDVS: WALL PROTECTORS/GUARDS, VET-P**  
 1957 ALVIN RICKEN DR.  
 POCATELLO, IDAHO 83201

SHEET TITLE: **MAIN FLOOR PLAN - PART 3**

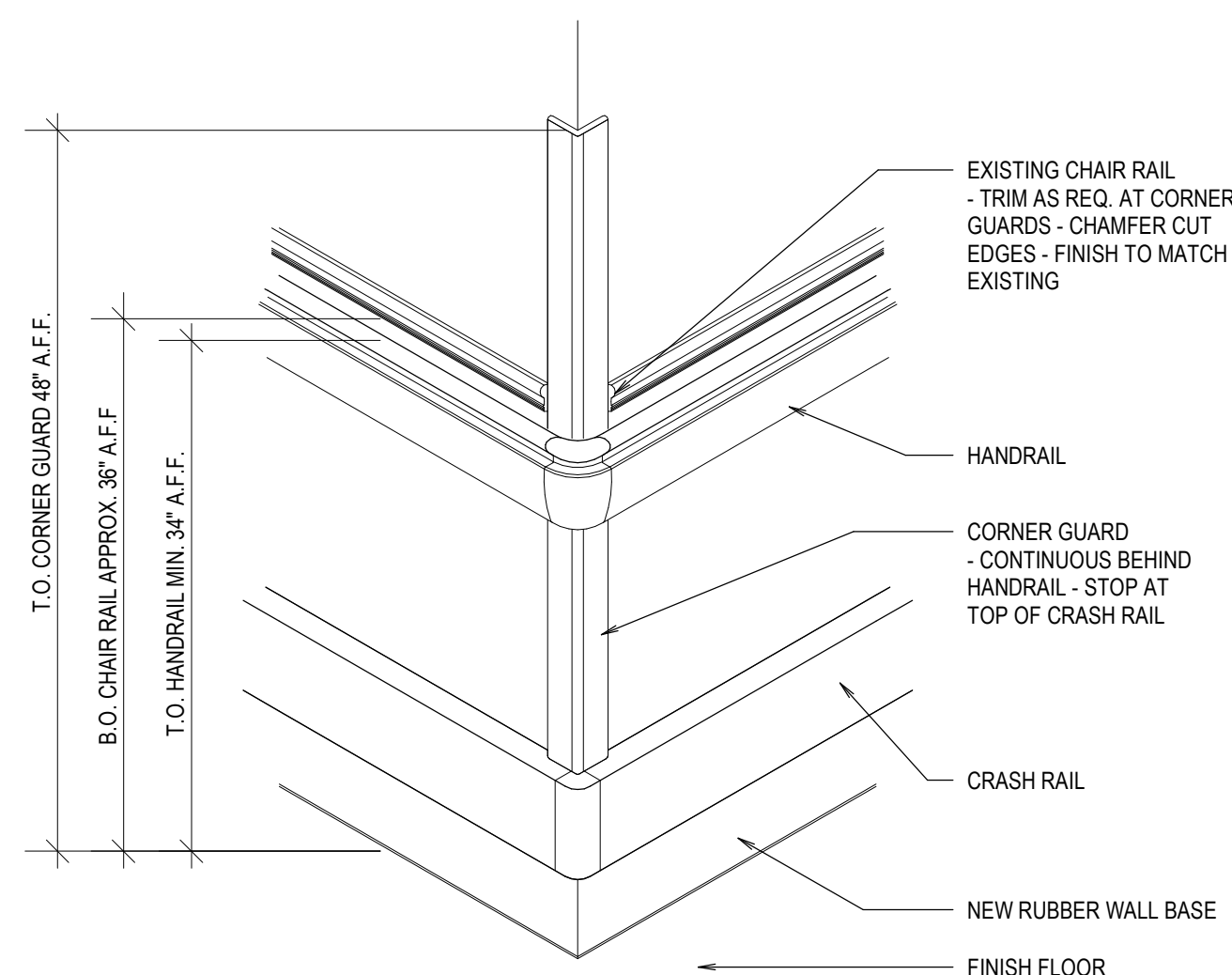
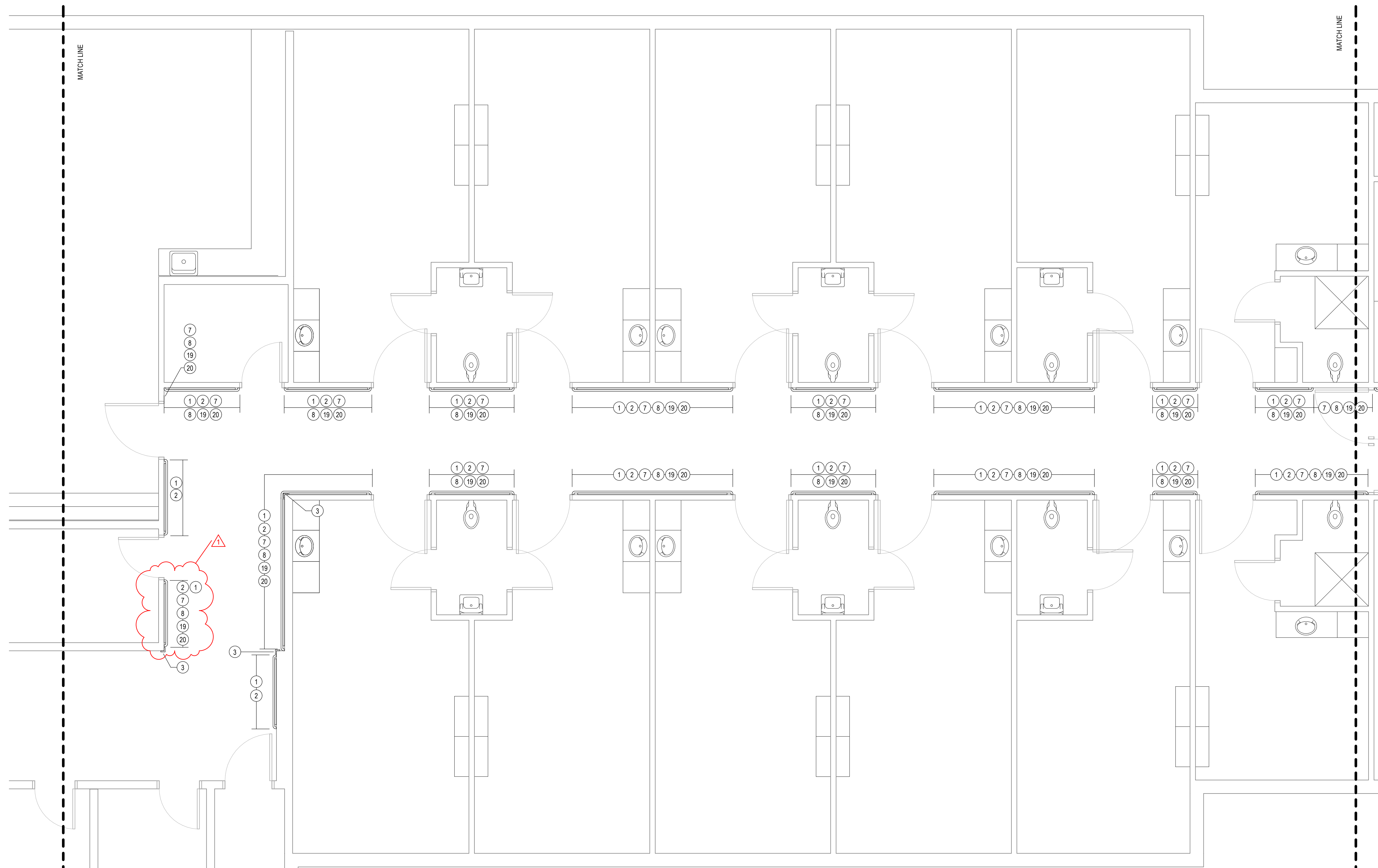
REVISIONS

NO.	ADDENDUM#1	DATE
1		2021-05-05

PROJECT NO.  
21004  
 DATE:  
APRIL 2021  
 DRAWN BY:  
NRH  
 CHECKED BY:  
NBW

DRAWING NO.:  
**A1.3**

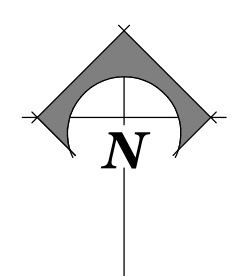




**2**  
A1.4  
**DETAIL**  
SCALE: 1" = 1'-0"

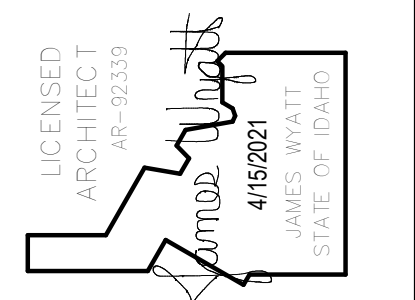
**KEYNOTES**

- BASE BID**
- 1 6" HANDRAIL. MOUNT WITH TOP OF GRIPPING SURFACE AT MIN. 34" ABOVE FINISH FLOOR. INSTALL MOUNTING BRACKETS SECURELY INTO WALL FRAMING OR SOLID BLOCKING. INSTALL CONTINUOUS CORNER AT ALL OUTSIDE CORNERS. AT ALL INSIDE CORNERS AND TERMINATIONS, RETURN HANDRAIL TO WALL. SEE 2/A1.4 FOR TYPICAL CORNER MOUNTING DETAIL.
  - 2 6" CRASH RAIL AND CONTINUOUS ALUMINUM RETAINER. MOUNT BOTTOM OF CRASH RAIL TIGHT TO TOP OF WALL BASE. FASTEN SECURELY INTO WALL FRAMING OR SOLID BLOCKING. PROVIDE CONTINUOUS OUTSIDE CORNERS. MITER ALL INSIDE CORNERS. AT TERMINATIONS OR INTERRUPTIONS RETURN CRASH RAIL TO WALL WITH OUTSIDE CORNERS. SEE 2/A1.4 FOR TYPICAL CORNER MOUNTING DETAIL.
  - 3 3" CORNER GUARD ON CONTINUOUS ALUMINUM RETAINER. INSTALL TOP OF CORNER GUARD AT 48" ABOVE FINISH FLOOR. KEEP BOTTOM TIGHT TO TOP OF WALL BASE OR CRASH RAIL. FASTEN RETAINER SECURELY INTO WALL FRAMING OR SOLID BLOCKING. SEE 2/A1.4 FOR TYPICAL CORNER MOUNTING DETAIL.
  - 4 2" CORNER GUARD ON CONTINUOUS ALUMINUM RETAINER. INSTALL TOP OF CORNER GUARD AT 48" ABOVE FINISH FLOOR. KEEP BOTTOM TIGHT TO TOP OF WALL BASE OR CRASH RAIL. FASTEN RETAINER SECURELY INTO WALL FRAMING OR SOLID BLOCKING. SEE 2/A1.4 FOR TYPICAL CORNER MOUNTING DETAIL.
  - 5 3" 135 DEGREE CORNER GUARD ON CONTINUOUS ALUMINUM RETAINER. INSTALL TOP OF CORNER GUARD AT 48" ABOVE FINISH FLOOR. KEEP BOTTOM TIGHT TO TOP OF WALL BASE OR CRASH RAIL. FASTEN RETAINER SECURELY INTO WALL FRAMING OR SOLID BLOCKING. SEE 2/A1.4 FOR TYPICAL CORNER MOUNTING DETAIL.
  - 6 6" CRASH RAIL AND CONTINUOUS ALUMINUM RETAINER. MOUNT TOP OF CRASH RAIL AT 34" ABOVE FINISH FLOOR. FASTEN SECURELY INTO WALL FRAMING OR SOLID BLOCKING. PROVIDE CONTINUOUS OUTSIDE CORNERS. MITER ALL INSIDE CORNERS. AT TERMINATIONS OR INTERRUPTIONS RETURN CRASH RAIL TO WALL WITH OUTSIDE CORNERS. SEE 2/A1.4 FOR TYPICAL CORNER MOUNTING DETAIL.
  - 7 PROVIDE AND INSTALL 4" RUBBER WALL BASE.
  - 8 PAINT WALL BELOW THE EXISTING CHAIR RAIL.
  - 9 PAINT WALL.
- ALTERNATE #1**
- 10 6" HANDRAIL. MOUNT WITH TOP OF GRIPPING SURFACE AT MIN. 34" ABOVE FINISH FLOOR. INSTALL MOUNTING BRACKETS SECURELY INTO WALL FRAMING OR SOLID BLOCKING. INSTALL CONTINUOUS CORNER AT ALL OUTSIDE CORNERS. AT ALL INSIDE CORNERS AND TERMINATIONS, RETURN HANDRAIL TO WALL. SEE 2/A1.4 FOR TYPICAL CORNER MOUNTING DETAIL.
  - 11 6" CRASH RAIL AND CONTINUOUS ALUMINUM RETAINER. MOUNT BOTTOM OF CRASH RAIL TIGHT TO TOP OF WALL BASE. FASTEN SECURELY INTO WALL FRAMING OR SOLID BLOCKING. PROVIDE CONTINUOUS OUTSIDE CORNERS. MITER ALL INSIDE CORNERS. AT TERMINATIONS OR INTERRUPTIONS RETURN CRASH RAIL TO WALL WITH OUTSIDE CORNERS. SEE 2/A1.4 FOR TYPICAL CORNER MOUNTING DETAIL.
  - 12 3" CORNER GUARD ON CONTINUOUS ALUMINUM RETAINER. INSTALL TOP OF CORNER GUARD AT 48" ABOVE FINISH FLOOR. KEEP BOTTOM TIGHT TO TOP OF WALL BASE OR CRASH RAIL. FASTEN RETAINER SECURELY INTO WALL FRAMING OR SOLID BLOCKING. SEE 2/A1.4 FOR TYPICAL CORNER MOUNTING DETAIL.
  - 13 2" CORNER GUARD ON CONTINUOUS ALUMINUM RETAINER. INSTALL TOP OF CORNER GUARD AT 48" ABOVE FINISH FLOOR. KEEP BOTTOM TIGHT TO TOP OF WALL BASE OR CRASH RAIL. FASTEN RETAINER SECURELY INTO WALL FRAMING OR SOLID BLOCKING. SEE 2/A1.4 FOR TYPICAL CORNER MOUNTING DETAIL.
  - 14 3" 135 DEGREE CORNER GUARD ON CONTINUOUS ALUMINUM RETAINER. INSTALL TOP OF CORNER GUARD AT 48" ABOVE FINISH FLOOR. KEEP BOTTOM TIGHT TO TOP OF WALL BASE OR CRASH RAIL. FASTEN RETAINER SECURELY INTO WALL FRAMING OR SOLID BLOCKING. SEE 2/A1.4 FOR TYPICAL CORNER MOUNTING DETAIL.
  - 15 6" CRASH RAIL AND CONTINUOUS ALUMINUM RETAINER. MOUNT TOP OF CRASH RAIL AT 34" ABOVE FINISH FLOOR. FASTEN SECURELY INTO WALL FRAMING OR SOLID BLOCKING. PROVIDE CONTINUOUS OUTSIDE CORNERS. MITER ALL INSIDE CORNERS. AT TERMINATIONS OR INTERRUPTIONS RETURN CRASH RAIL TO WALL WITH OUTSIDE CORNERS. SEE 2/A1.4 FOR TYPICAL CORNER MOUNTING DETAIL.
  - 16 PROVIDE AND INSTALL 4" RUBBER WALL BASE.
  - 17 PAINT WALL BELOW THE EXISTING CHAIR RAIL.
  - 18 PAINT WALL.
- ALTERNATE #2**
- 19 PROVIDE AND INSTALL CHAIR RAIL.
- ALTERNATE #3**
- 20 PROVIDE AND INSTALL WALL COVERING



**MAIN LEVEL PART 4**

SCALE: 1/4" = 1'-0"



**nbwarchitects p.a.**  
ARCHITECTURE / PLANNING / INTERIORS  
KEVIN R. BODILY, A.I.A. JAMES H. WYATT, A.I.A. GEOFF L. NELSON, A.I.A.  
900 JOHN HODGINS PARKWAY / P. O. BOX 2212 / IDAHO FALLS, IDAHO 83403-2212  
(208) 522-8779 (F) 208-522-8785 (U) nbwarchitects.com

PROJECT: **21-609 IDVS: WALL PROTECTORS/GUARDS, VET-P**  
1957 ALVIN RICKEN DR.  
POCATELLO, IDAHO 83201  
SHEET TITLE: **MAIN FLOOR PLAN - PART 4**

REVISIONS

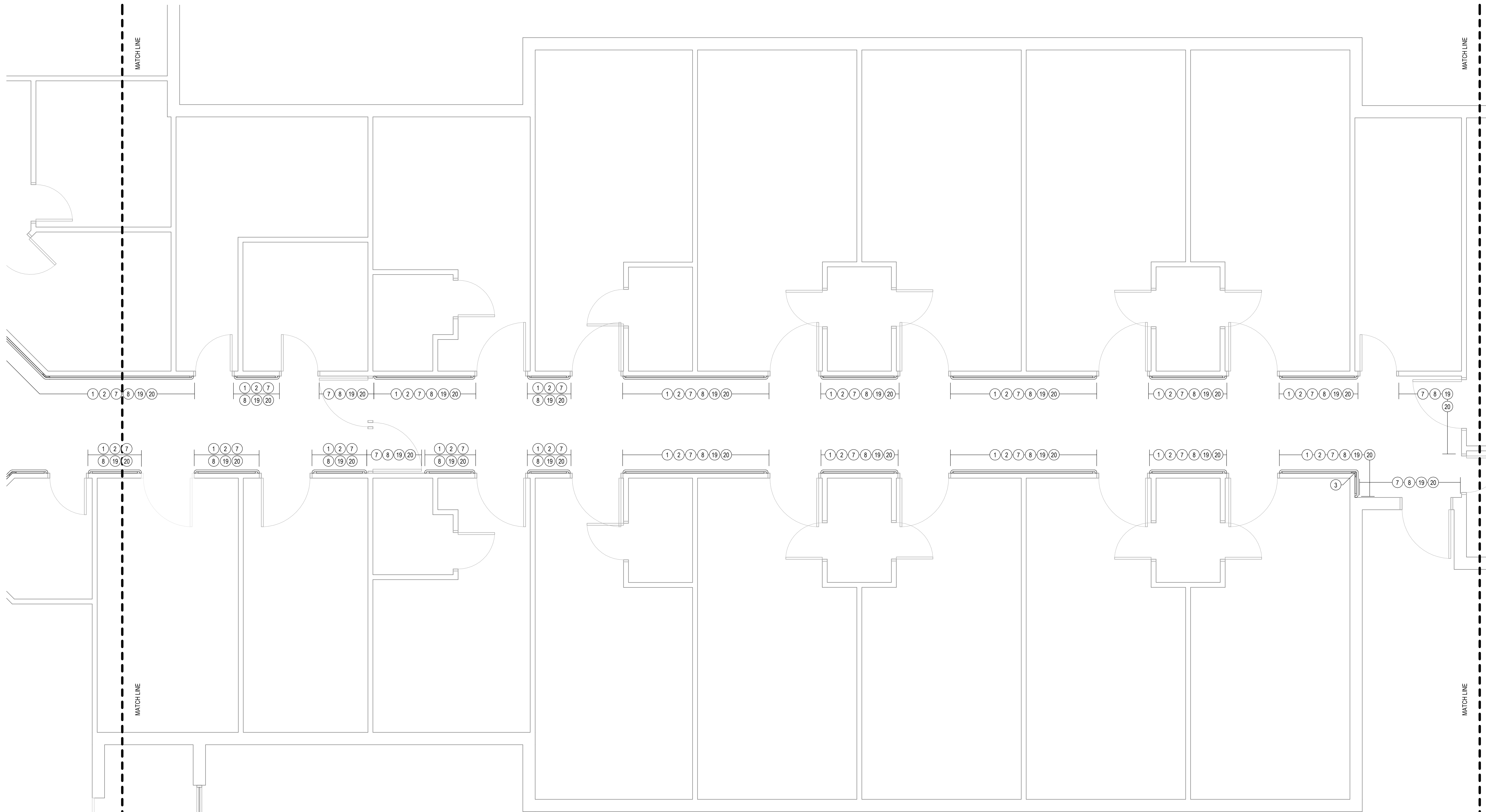
NO.	ADDENDUM #1	DATE
1		2021-05-06

PROJECT NO. 21004  
DATE: APRIL 2021  
DRAWN BY: NRH  
CHECKED BY: NBW

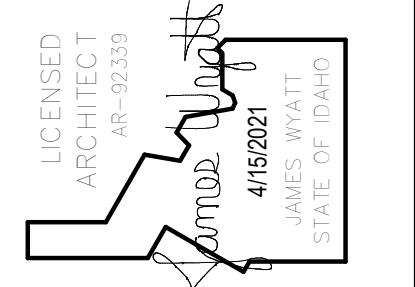
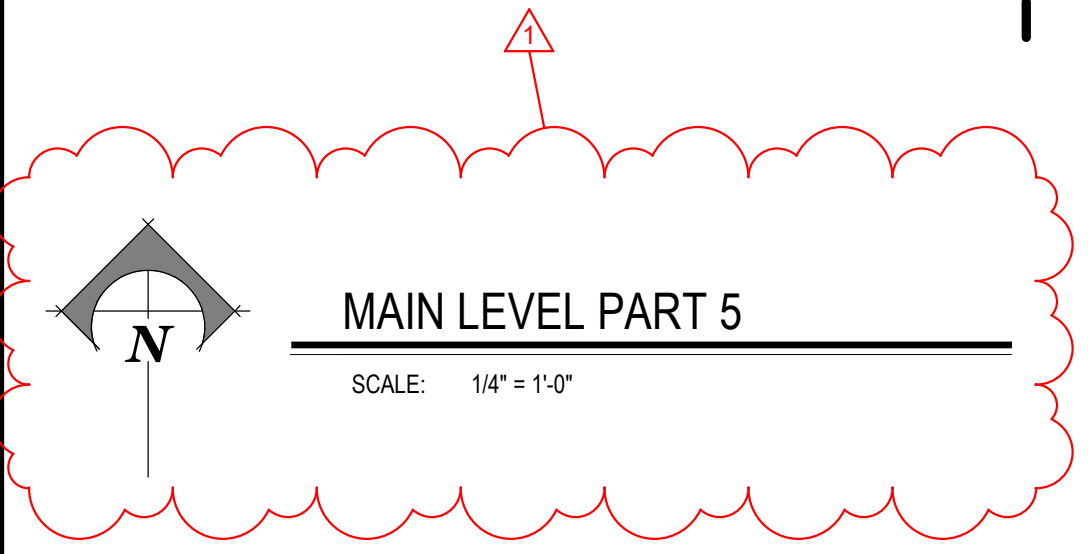
DRAWING NO.:

**A1.4**





KEYNOTES	KEYNOTES	KEYNOTES	KEYNOTES
<p><b>BASE BID</b></p> <p>① 6" HANDRAIL. MOUNT WITH TOP OF GRIPPING SURFACE AT MIN. 34" ABOVE FINISH FLOOR. INSTALL MOUNTING BRACKETS SECURELY INTO WALL FRAMING OR SOLID BLOCKING. INSTALL CONTINUOUS CORNER AT ALL OUTSIDE CORNERS. AT ALL INSIDE CORNERS AND TERMINATIONS, RETURN HANDRAIL TO WALL. SEE 2/A1.4 FOR TYPICAL CORNER MOUNTING DETAIL.</p> <p>② 6" CRASH RAIL AND CONTINUOUS ALUMINUM RETAINER. MOUNT BOTTOM OF CRASH RAIL TIGHT TO TOP OF WALL BASE. FASTEN SECURELY INTO WALL FRAMING OR SOLID BLOCKING. PROVIDE CONTINUOUS OUTSIDE CORNERS. MITER ALL INSIDE CORNERS. AT TERMINATIONS OR INTERRUPTIONS RETURN CRASH RAIL TO WALL WITH OUTSIDE CORNERS. SEE 2/A1.4 FOR TYPICAL CORNER MOUNTING DETAIL.</p> <p>③ 3" CORNER GUARD ON CONTINUOUS ALUMINUM RETAINER. INSTALL TOP OF CORNER GUARD AT 48" ABOVE FINISH FLOOR. KEEP BOTTOM TIGHT TO TOP OF WALL BASE OR CRASH RAIL. FASTEN RETAINER SECURELY INTO WALL FRAMING OR SOLID BLOCKING. SEE 2/A1.4 FOR TYPICAL CORNER MOUNTING DETAIL.</p> <p>④ 2" CORNER GUARD ON CONTINUOUS ALUMINUM RETAINER. INSTALL TOP OF CORNER GUARD AT 48" ABOVE FINISH FLOOR. KEEP BOTTOM TIGHT TO TOP OF WALL BASE OR CRASH RAIL. FASTEN RETAINER SECURELY INTO WALL FRAMING OR SOLID BLOCKING. SEE 2/A1.4 FOR TYPICAL CORNER MOUNTING DETAIL.</p> <p>⑤ 3" 135 DEGREE CORNER GUARD ON CONTINUOUS ALUMINUM RETAINER. INSTALL TOP OF CORNER GUARD AT 48" ABOVE FINISH FLOOR. KEEP BOTTOM TIGHT TO TOP OF WALL BASE OR CRASH RAIL. FASTEN RETAINER SECURELY INTO WALL FRAMING OR SOLID BLOCKING. SEE 2/A1.4 FOR TYPICAL CORNER MOUNTING DETAIL.</p>	<p>⑥ 6" CRASH RAIL AND CONTINUOUS ALUMINUM RETAINER. MOUNT TOP OF CRASH RAIL AT 34" ABOVE FINISH FLOOR. FASTEN SECURELY INTO WALL FRAMING OR SOLID BLOCKING. PROVIDE CONTINUOUS OUTSIDE CORNERS. MITER ALL INSIDE CORNERS. AT TERMINATIONS OR INTERRUPTIONS RETURN CRASH RAIL TO WALL WITH OUTSIDE CORNERS. SEE 2/A1.4 FOR TYPICAL CORNER MOUNTING DETAIL.</p> <p>⑦ PROVIDE AND INSTALL 4" RUBBER WALL BASE.</p> <p>⑧ PAINT WALL BELOW THE EXISTING CHAIR RAIL.</p> <p>⑨ PAINT WALL.</p> <p><b>ALTERNATE #1</b></p> <p>⑩ 6" HANDRAIL. MOUNT WITH TOP OF GRIPPING SURFACE AT MIN. 34" ABOVE FINISH FLOOR. INSTALL MOUNTING BRACKETS SECURELY INTO WALL FRAMING OR SOLID BLOCKING. INSTALL CONTINUOUS CORNER AT ALL OUTSIDE CORNERS. AT ALL INSIDE CORNERS AND TERMINATIONS, RETURN HANDRAIL TO WALL. SEE 2/A1.4 FOR TYPICAL CORNER MOUNTING DETAIL.</p> <p>⑪ 6" CRASH RAIL AND CONTINUOUS ALUMINUM RETAINER. MOUNT BOTTOM OF CRASH RAIL TIGHT TO TOP OF WALL BASE. FASTEN SECURELY INTO WALL FRAMING OR SOLID BLOCKING. PROVIDE CONTINUOUS OUTSIDE CORNERS. MITER ALL INSIDE CORNERS. AT TERMINATIONS OR INTERRUPTIONS RETURN CRASH RAIL TO WALL WITH OUTSIDE CORNERS. SEE 2/A1.4 FOR TYPICAL CORNER MOUNTING DETAIL.</p>	<p>⑫ 3" CORNER GUARD ON CONTINUOUS ALUMINUM RETAINER. INSTALL TOP OF CORNER GUARD AT 48" ABOVE FINISH FLOOR. KEEP BOTTOM TIGHT TO TOP OF WALL BASE OR CRASH RAIL. FASTEN RETAINER SECURELY INTO WALL FRAMING OR SOLID BLOCKING. SEE 2/A1.4 FOR TYPICAL CORNER MOUNTING DETAIL.</p> <p>⑬ 2" CORNER GUARD ON CONTINUOUS ALUMINUM RETAINER. INSTALL TOP OF CORNER GUARD AT 48" ABOVE FINISH FLOOR. KEEP BOTTOM TIGHT TO TOP OF WALL BASE OR CRASH RAIL. FASTEN RETAINER SECURELY INTO WALL FRAMING OR SOLID BLOCKING. SEE 2/A1.4 FOR TYPICAL CORNER MOUNTING DETAIL.</p> <p>⑭ 3" 135 DEGREE CORNER GUARD ON CONTINUOUS ALUMINUM RETAINER. INSTALL TOP OF CORNER GUARD AT 48" ABOVE FINISH FLOOR. KEEP BOTTOM TIGHT TO TOP OF WALL BASE OR CRASH RAIL. FASTEN RETAINER SECURELY INTO WALL FRAMING OR SOLID BLOCKING. SEE 2/A1.4 FOR TYPICAL CORNER MOUNTING DETAIL.</p> <p>⑮ 6" CRASH RAIL AND CONTINUOUS ALUMINUM RETAINER. MOUNT TOP OF CRASH RAIL AT 34" ABOVE FINISH FLOOR. FASTEN SECURELY INTO WALL FRAMING OR SOLID BLOCKING. PROVIDE CONTINUOUS OUTSIDE CORNERS. MITER ALL INSIDE CORNERS. AT TERMINATIONS OR INTERRUPTIONS RETURN CRASH RAIL TO WALL WITH OUTSIDE CORNERS. SEE 2/A1.4 FOR TYPICAL CORNER MOUNTING DETAIL.</p> <p>⑯ PROVIDE AND INSTALL 4" RUBBER WALL BASE.</p> <p>⑰ PAINT WALL BELOW THE EXISTING CHAIR RAIL.</p> <p>⑱ PAINT WALL.</p>	<p><b>ALTERNATE #2</b></p> <p>⑲ PROVIDE AND INSTALL CHAIR RAIL.</p> <p><b>ALTERNATE #3</b></p> <p>⑳ PROVIDE AND INSTALL WALL COVERING.</p>



**nbwarchitects p.a.**  
 ARCHITECTURE / PLANNING / INTERIORS  
 KEVIN R. BODILY, A.I.A. JAMES H. WYATT, A.I.A. GEOFF L. NELSON, A.I.A.  
 950 JOHN HODGINS PARKWAY / P. O. BOX 2212 / IDAHO FALLS, IDAHO 83403-2212  
 (P) 208.522.8779 (F) 208.522.8785 (W) nbwarchitects.com

REMODEL FOR:  
**21-609 IDVS: WALL PROTECTORS/GUARDS, VET-P**  
 1957 ALVIN RICKEN DR.  
 POCATELLO, IDAHO 83201  
 SHEET TITLE: MAIN FLOOR PLAN - PART 5

REVISIONS
1 ADDENDUM #1 2021-05-05

PROJECT NO. 21004  
 DATE: APRIL 2021  
 DRAWN BY: NRH  
 CHECKED BY: NBW

DRAWING NO.: **A1.5**





**TYPICAL CORRIDOR CONDITION**



**TYPICAL CORRIDOR CONDITION**

- CHAIR RAIL
- HANDRAIL
- WALL COVERING
- CRASH RAIL
- WALL BASE



**TYPICAL CRASH RAIL AND WALL BASE CONDITION**



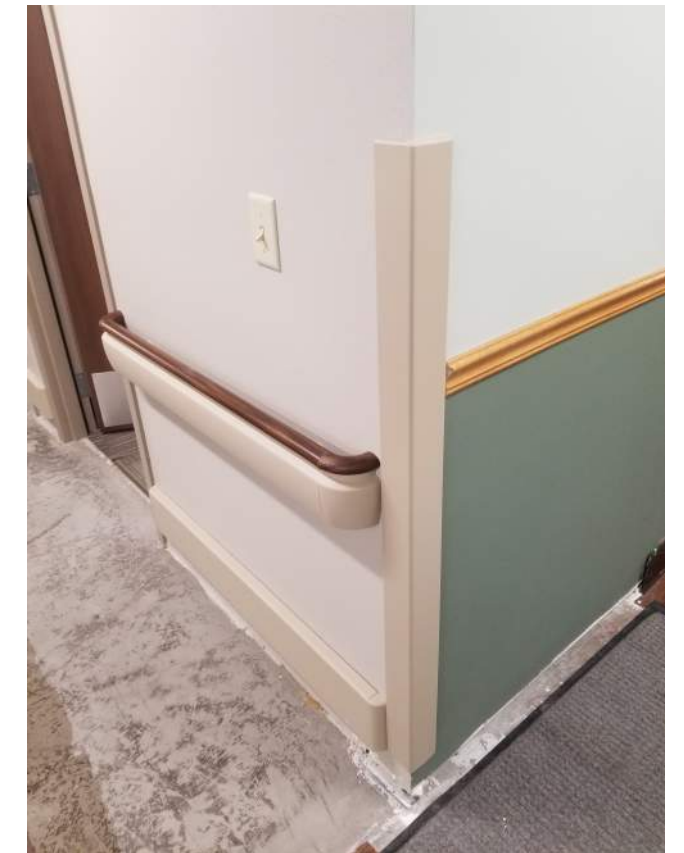
**TYPICAL HANDRAIL ATTACHMENT**



**TYPICAL CORNER GUARD CONDITION**



**TYPICAL CRASH RAIL CONDITION**



**EXAMPLE OF NEW HANDRAIL, CRASH RAIL AND CORNER GUARD**



**NURSES STATION CONDITION**