

ADDENDUM #1

Date: November 20, 2018

This Addendum applicable to work designated herein shall be understood to be and is an Addendum and as such shall be part of and included in the Contract.

To all bidders for furnishing all labor and materials necessary for:

**SHELLEY SENIOR CENTER
SHELLEY, IDAHO
REMODEL**

Failure to acknowledge receipt of this Addendum on the bid proposal form may result in rejection of your bid.

Addendum consists of: 2 pages. Attached Documents consist of: Sheet A1.0, Sheet A1.1, AD1.1, AD1.2, AD1.3, Pre-bid Conference Sign-in Sheet, Sheet E2.0, Sheet E3.0

GENERAL ITEMS

- 1. Bid Opening Date:** November 28, 2018
Time: 2:00 p.m.
Location: NBW Architect's Office
990 John Adams, Pkwy
Idaho Falls, Idaho 83401
2. The cost of the General building permit fee is to be included in the bid amount.
3. The contract period for construction shall be **90 calendar days** in lieu of 45 days as noted in the documents. The kitchen shall be shut down for a maximum of 60 consecutive calendar days. After the contract has been awarded the successful contractor shall be required to order and have on hand any materials, equipment, etc. for this project prior to the start of construction. If more time is required for the acquisition of all materials, equipment, etc. the contractor shall notify the architect in writing prior to the execution of the contract.
4. The pre-bid conference sign-in sheet has been attached for reference only.

ARCHITECTURAL ITEMS

1. Sheet A1.0 has been replaced – see attached
2. Sheet A1.1 has been replaced – see attached
3. Section 14/A2.1 has been replaced – see attached AD1.1
4. Detail 11/A3.1 has been replaced – see attached AD1.2
5. Elevation 1/A2.1 has been replaced – see attached AD1.3



MECHANICAL ITEMS

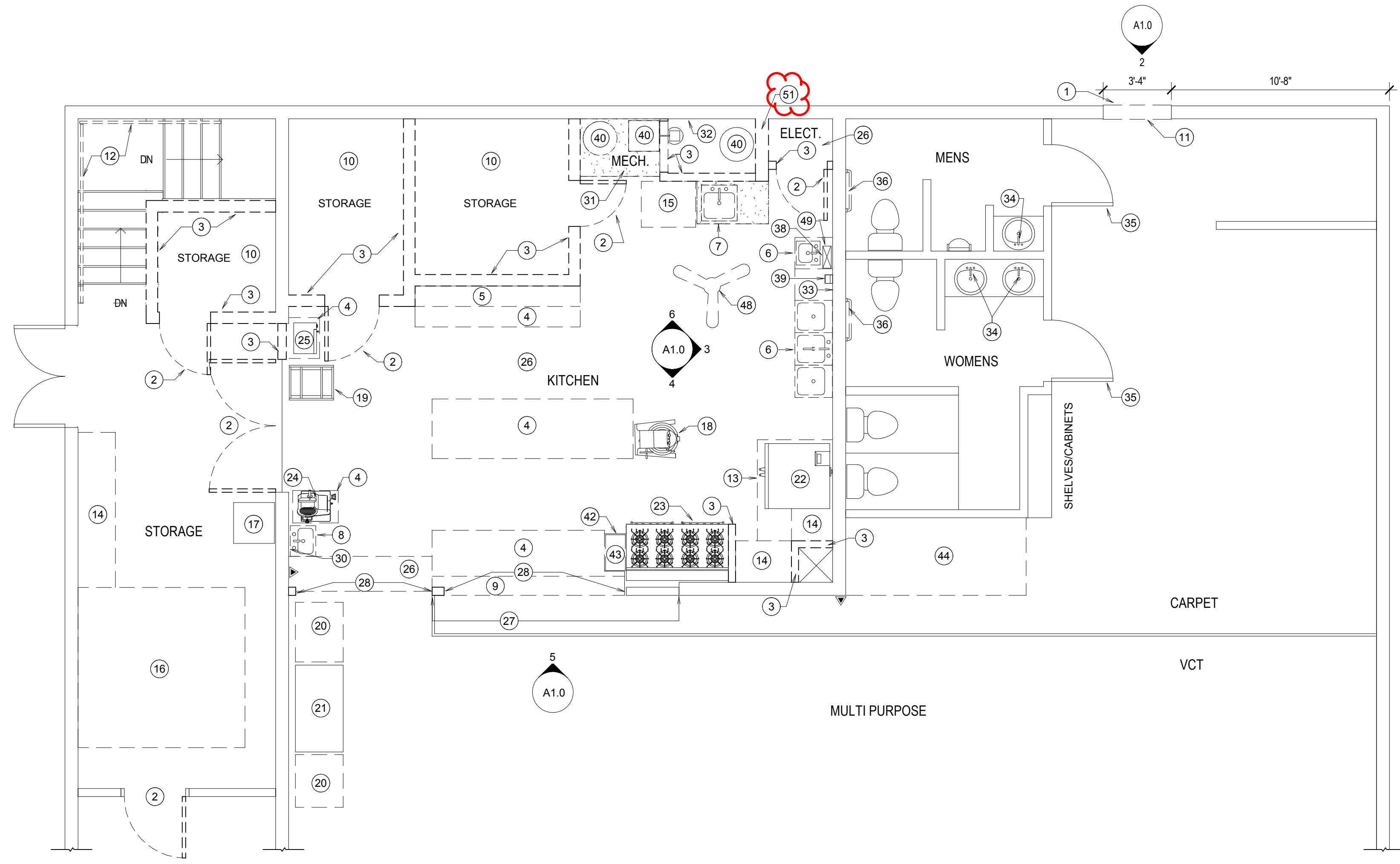
1. Specifications Section 23 3400 EXHAUST FANS - Twin City Fan has been approved as a manufacturer.

ELECTRICAL ITEMS

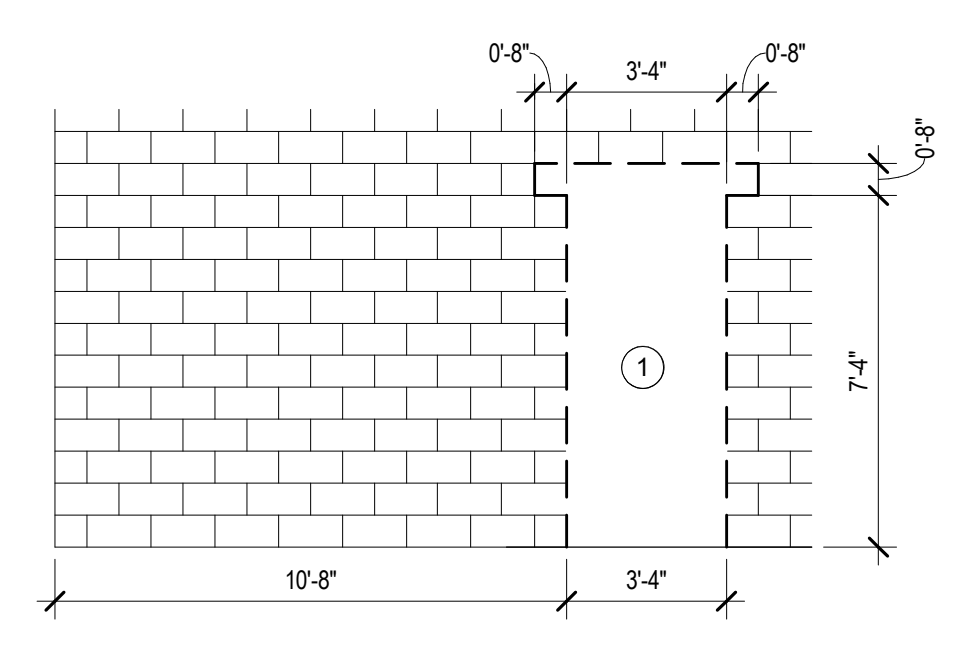
1. Sheet E2.0 has been replaced – see attached
2. Sheet E3.0 has been replaced – see attached

END OF ADDENDUM NO.1

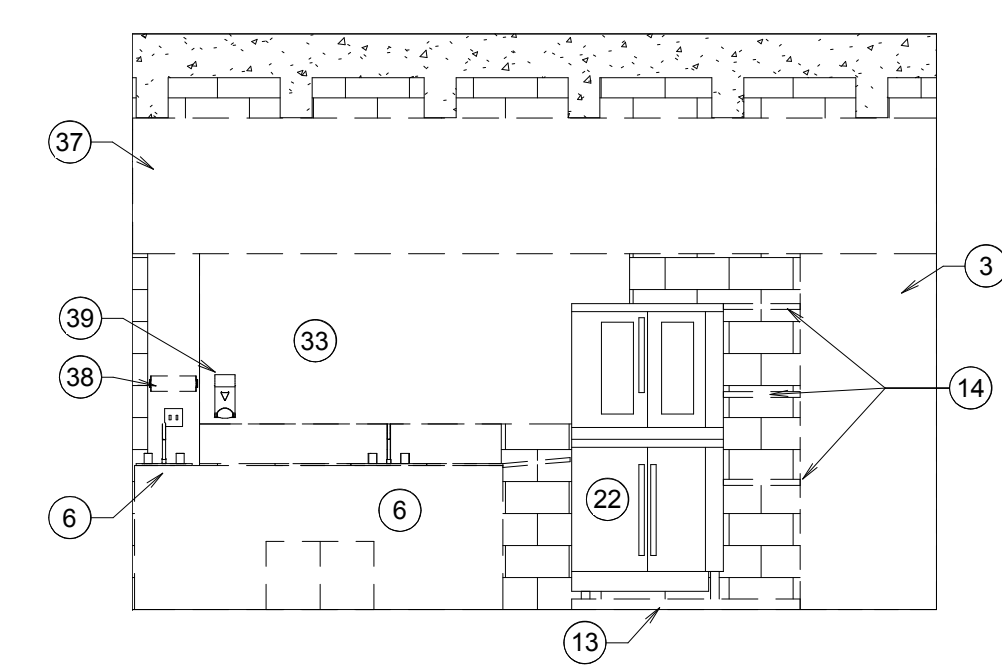




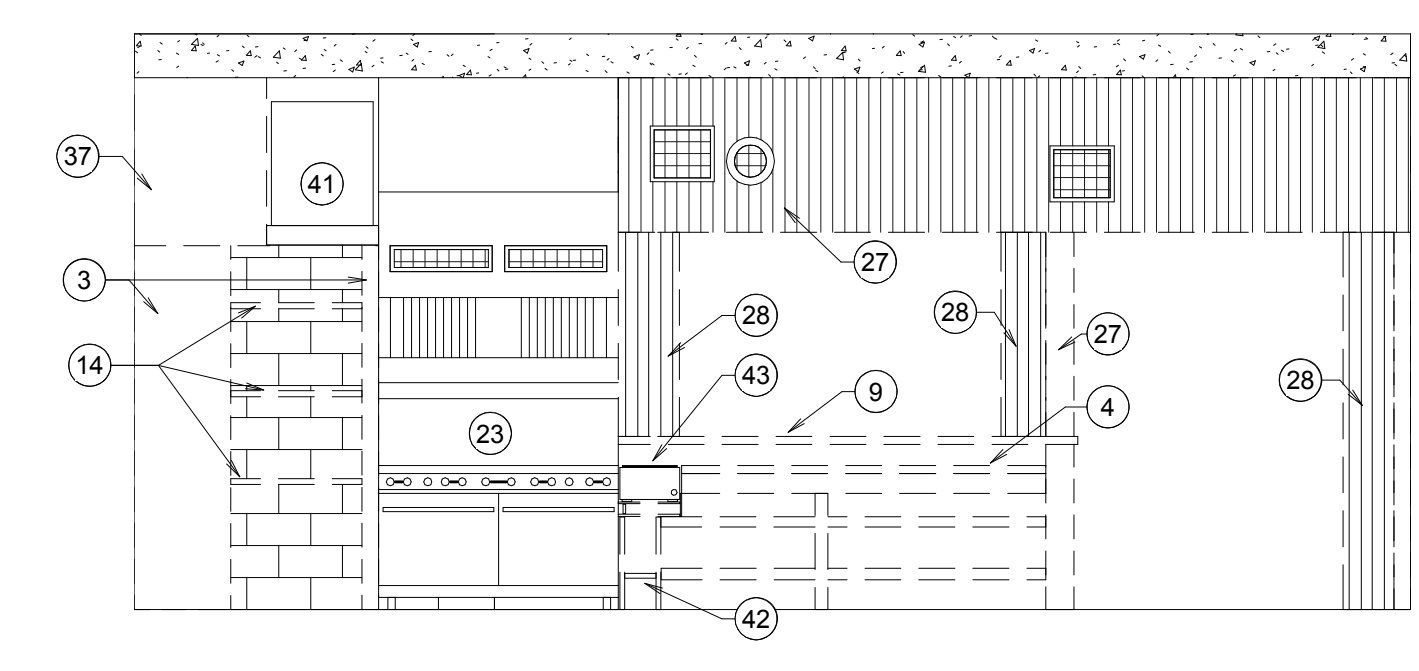
1
A1.0
DEMOLITION PLAN
SCALE: 1/4" = 1'-0"



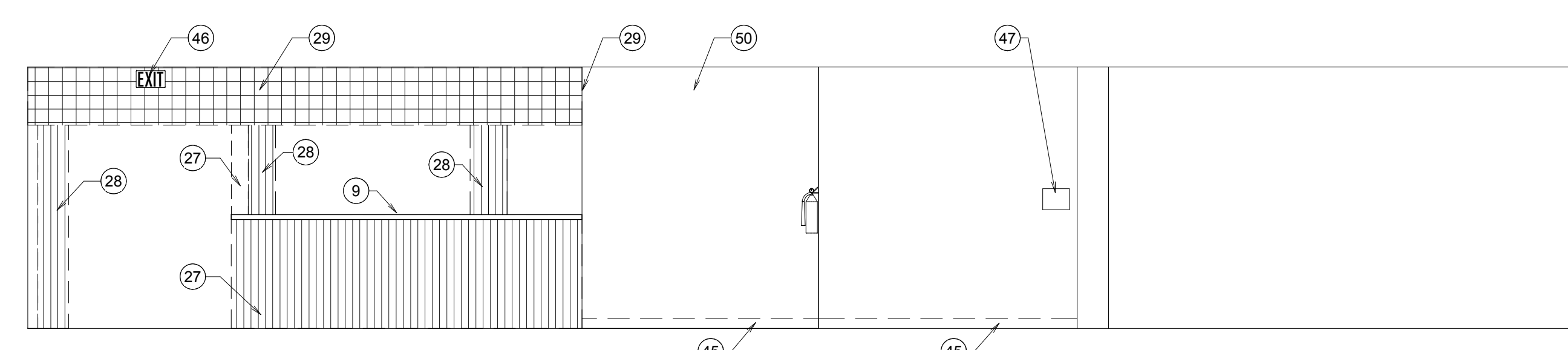
2
A1.0
ELEVATION
SCALE: 1/4" = 1'-0"



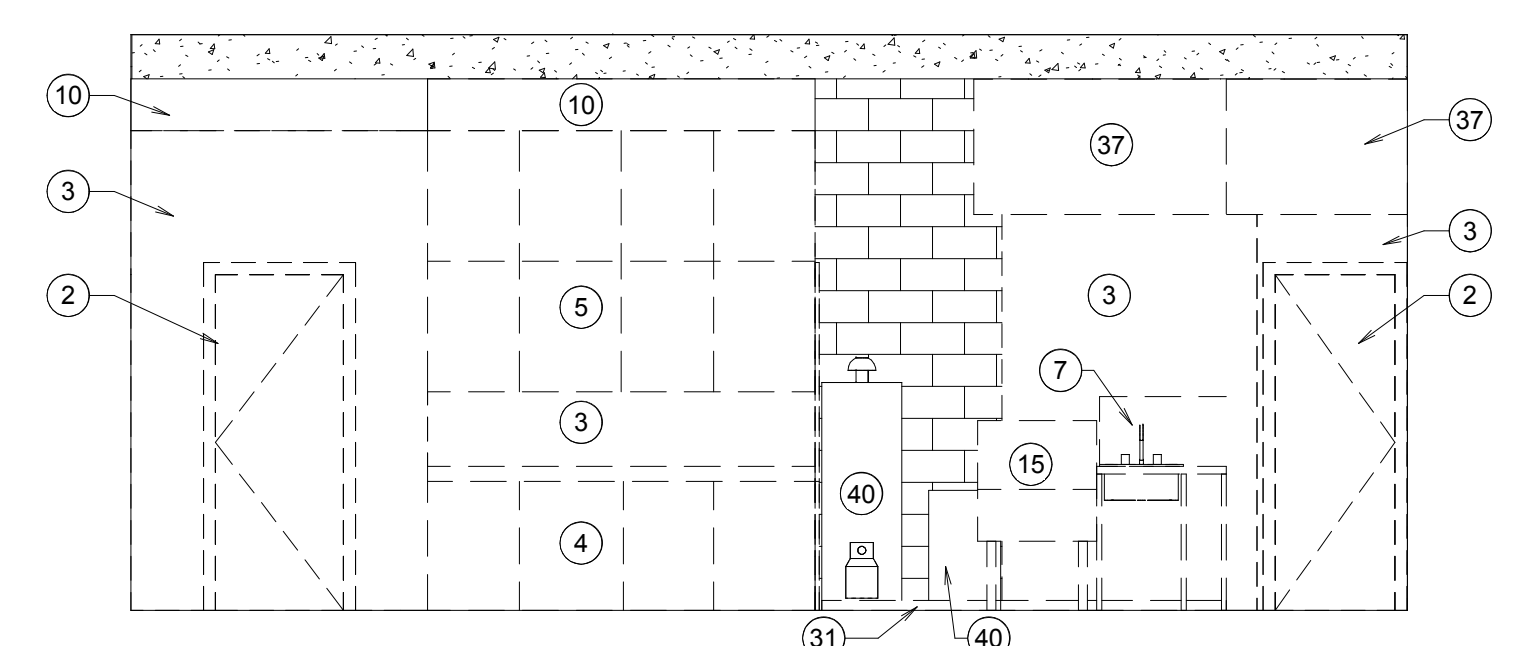
3
A1.0
ELEVATION
SCALE: 1/4" = 1'-0"



4
A1.0
ELEVATION
SCALE: 1/4" = 1'-0"



5
A1.0
ELEVATION
SCALE: 1/4" = 1'-0"



6
A1.0
ELEVATION
SCALE: 1/4" = 1'-0"

- KEYNOTES**
- REMOVE A PORTION OF THE EXISTING CMU WALL SUFFICIENT TO FRAME AND INSTALL DOOR 101
 - REMOVE DOOR, FRAME AND HARDWARE COMPLETE
 - REMOVE FRAMED WALL AND ASSOCIATED TRIM AND BASE
 - REMOVE BASE CABINETS, COUNTERTOP AND HARDWARE COMPLETE
 - REMOVE UPPER CABINETS AND HARDWARE COMPLETE
 - REMOVE EXISTING PLUMBING FIXTURE, DRAIN BOARD AND ASSOCIATED FAUX WOOD PANELING
 - REMOVE EXISTING PLUMBING FIXTURE
 - REMOVE EXISTING PLUMBING FIXTURE AND ASSOCIATED CABINET
 - REMOVE UPPER COUNTER
 - REMOVE STORAGE ROOM FLOOR, CEILING AND ANY ASSOCIATED FRAMING
 - REMOVE A PORTION OF THE WALL FURR-OUT, TRIM AND BASE SUFFICIENT TO FRAME AND INSTALL DOOR 101 - REROUTE GAS AND ELECTRIC AS REQUIRED - SEE AND MECH. AND ELEC.
 - REMOVE WOOD HANDRAIL, BRACKETS AND HARDWARE - PATCH ANY HOLES FROM THE REMOVAL OF THE HANDRAIL
 - REMOVE THE WOOD PLATFORM UNDER THE OVENS AND SHELVES
 - REMOVE WOOD SHELVES
 - REMOVE EXISTING DISHWASHER
 - REMOVE WALK-IN FREEZER AND ASSOCIATED COMPRESSOR
 - REMOVE ICE MAKER - TO BE REINSTALLED AFTER WORK IS COMPLETE
 - REMOVE MIXER - TO BE REINSTALLED AFTER WORK IS COMPLETE
 - REMOVE COOLING RACK
 - REMOVE FREEZER
 - REFRIGERATOR TO BE MOVED AFTER WORK IS COMPLETE
 - REMOVE OVENS - TO BE REINSTALLED AFTER WORK IS COMPLETE
 - REMOVE GAS STOVE - TO BE REINSTALLED AFTER WORK IS COMPLETE
 - REMOVE MEAT SLICER - TO BE REINSTALLED AFTER WORK IS COMPLETE

- KEYNOTES**
- REMOVE MICROWAVE - TO BE REINSTALLED AFTER WORK IS COMPLETE
 - REMOVE VCT FLOORING, BASE, AND ALL OTHER EXISTING FLOORING BELOW THE TILE AS WELL AS ALL ADHESIVES DOWN TO BARE CONCRETE AND PREP FLOOR TO RECEIVE NEW FLOORING
 - REMOVE FAUX WOOD PANELING - FRAMING TO REMAIN
 - REMOVE FOLDING ACCORDION DOOR, TRACK, FRAME AND HARDWARE COMPLETE
 - REMOVE FAUX WOOD SHINGLES AND ASSOCIATED PANELING BENEATH - FRAMING TO REMAIN
 - REMOVE MIRROR AND SOAP DISPENSER
 - REMOVE CONCRETE PLATFORM UNDER THE HOT WATER HEATERS, WATER SOFTENER AND SINK
 - REMOVE FRP WALL PANELING AND COAT HOOKS
 - REMOVE FRP WALL PANEL
 - REMOVE FAUCET
 - REMOVE DOOR KNOB COMPLETE
 - REMOVE GRAB BAR - PATCH ANY HOLES FROM THE REMOVAL OF GRAB BAR
 - REMOVE SOFFIT AND FRAMING COMPLETE
 - REMOVE PAPER TOWEL HOLDER
 - REMOVE SOAP DISPENSER
 - REMOVE EXISTING HOT WATER HEATER AND WATER SOFTENER - TO BE REINSTALLED - SEE MECHANICAL
 - RETAIN ANSUL FIRE SUPPRESSION SYSTEM AND SHELF
 - REMOVE WOOD STAND
 - REMOVE WARMER - TO BE REINSTALLED AFTER WORK IS COMPLETE
 - REMOVE CARPET, BASE AND ALL ADHESIVES DOWN TO BARE CONCRETE AND PREP FLOOR TO RECEIVE NEW FLOORING
 - REMOVE RUBBER BASE AND ADHESIVES
 - REMOVE EXIT SIGN
 - REMOVE TOILET ROOM SIGN
 - REMOVE CEILING FAN
 - REMOVE GYPSUM BOARD FURR OUT AROUND PLUMBING CHASE
 - REMOVE WALL PAPER MURAL
 - REMOVE CMU WALL - RELOCATE ELECTRICAL PANEL - SEE ELECTRICAL

LICENSED ARCHITECT
93339
JAMES WATT
9/28/18
PAGE 001 OF 001

nbw architects p.a.
ARCHITECTURE / PLANNING / INTERIORS
SCOTT L NELSON A.I.A. KEVIN R BODILY A.I.A. JAMES H WYATT A.I.A.
990 JOHN RIBBS PARKWAY P.O. BOX 2212 - IRIDI FALLS, ID 83402-2212
(208) 208-5222 (208) 208-5222 (208) 208-5222

REMODEL FOR:
SHELLEY SENIOR CENTER
193 W. PINE ST.
SHELLEY, ID 83274

PROJECT:
SHEET TITLE:
DEMOLITION PLAN & ELEVATIONS

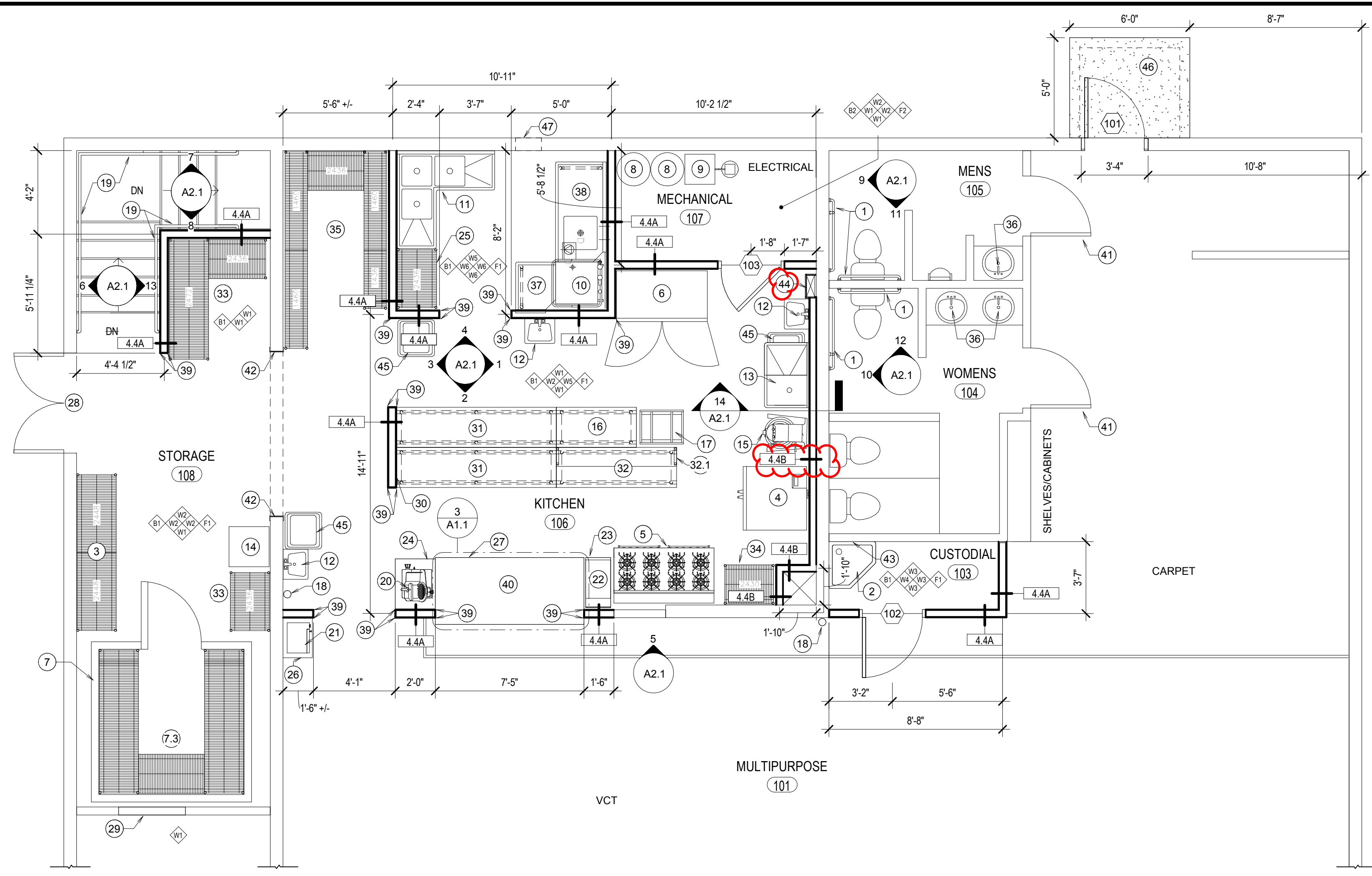
REVISIONS

PROJECT NO.
18023
DATE:
OCTOBER 2018
DRAWN BY:
NRH
CHECKED BY:
JHW

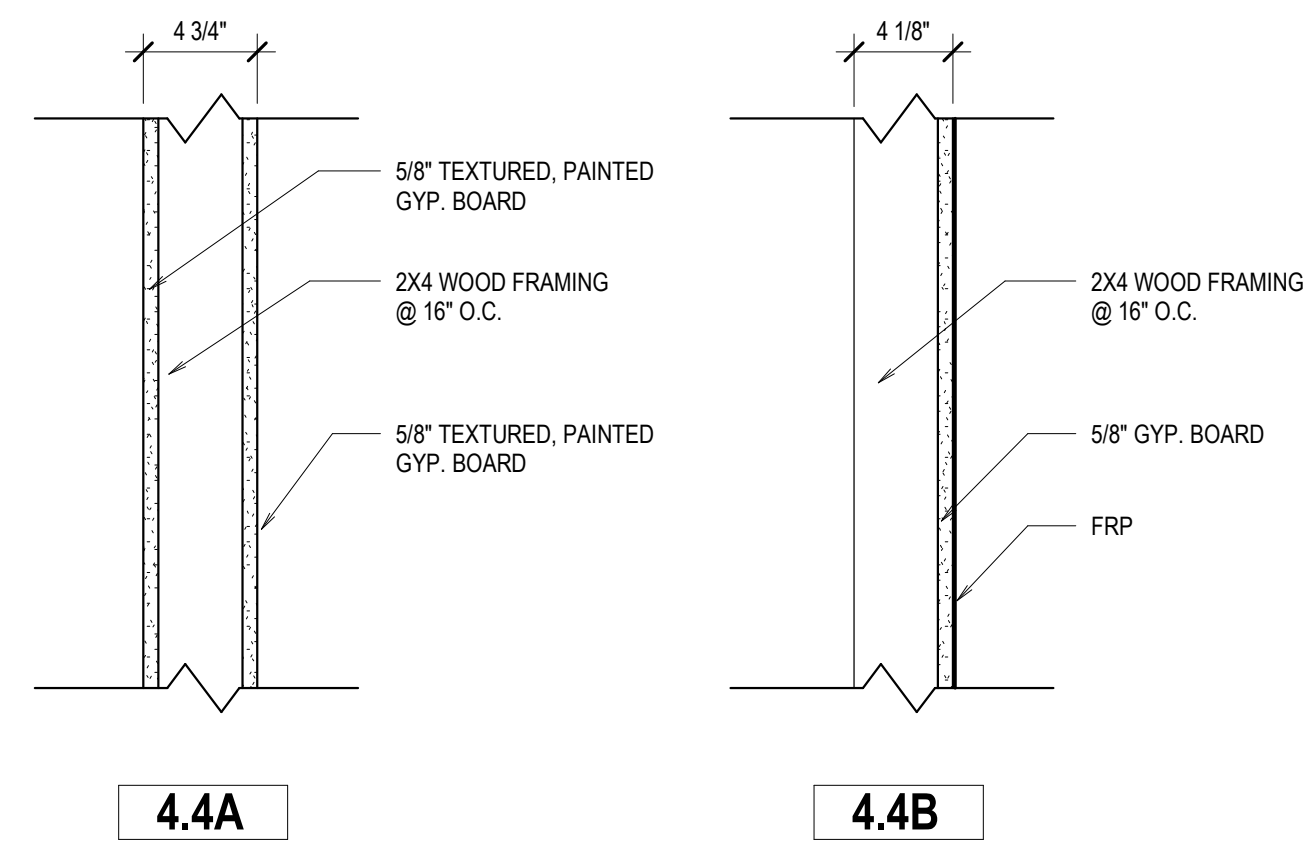
DRAWING NO.: AD#1

A1.0
REVISION 1

REVISED 11/20/18

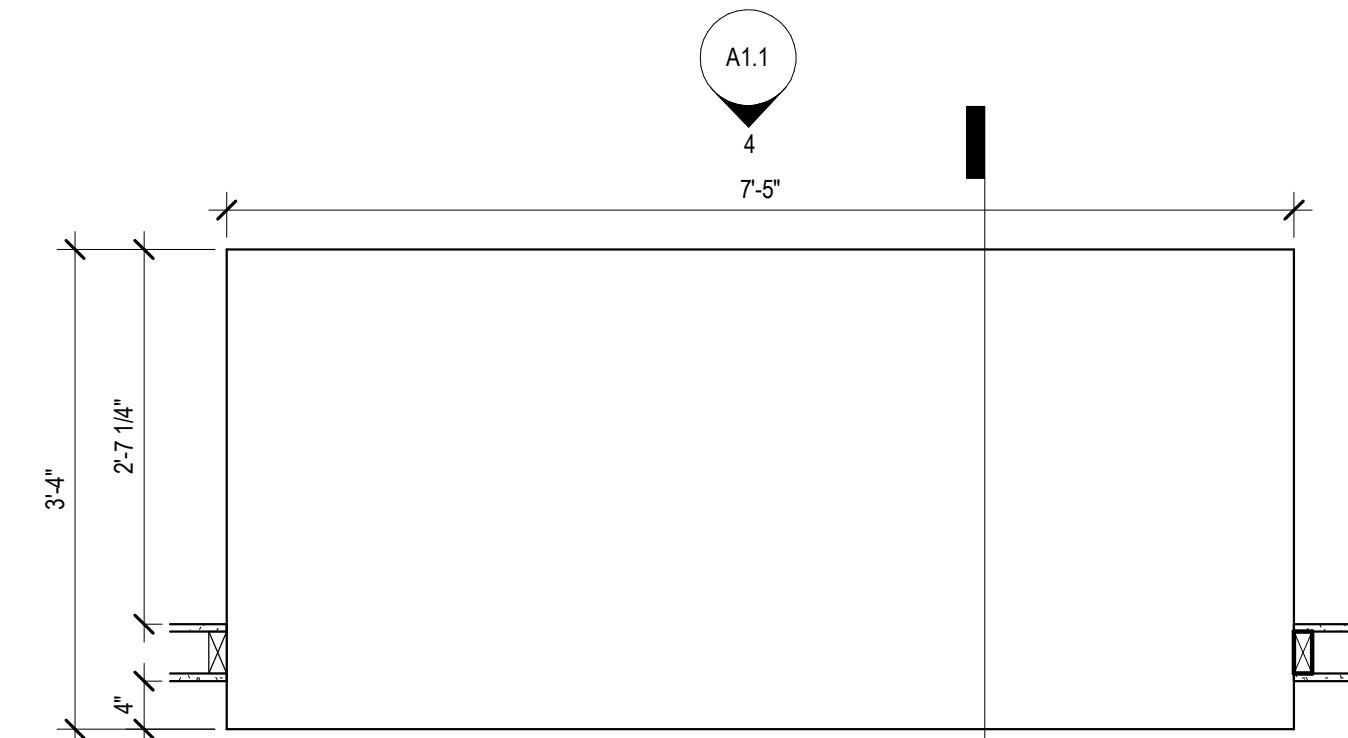


1 FLOOR PLAN
SCALE: 1/4" = 1'-0"

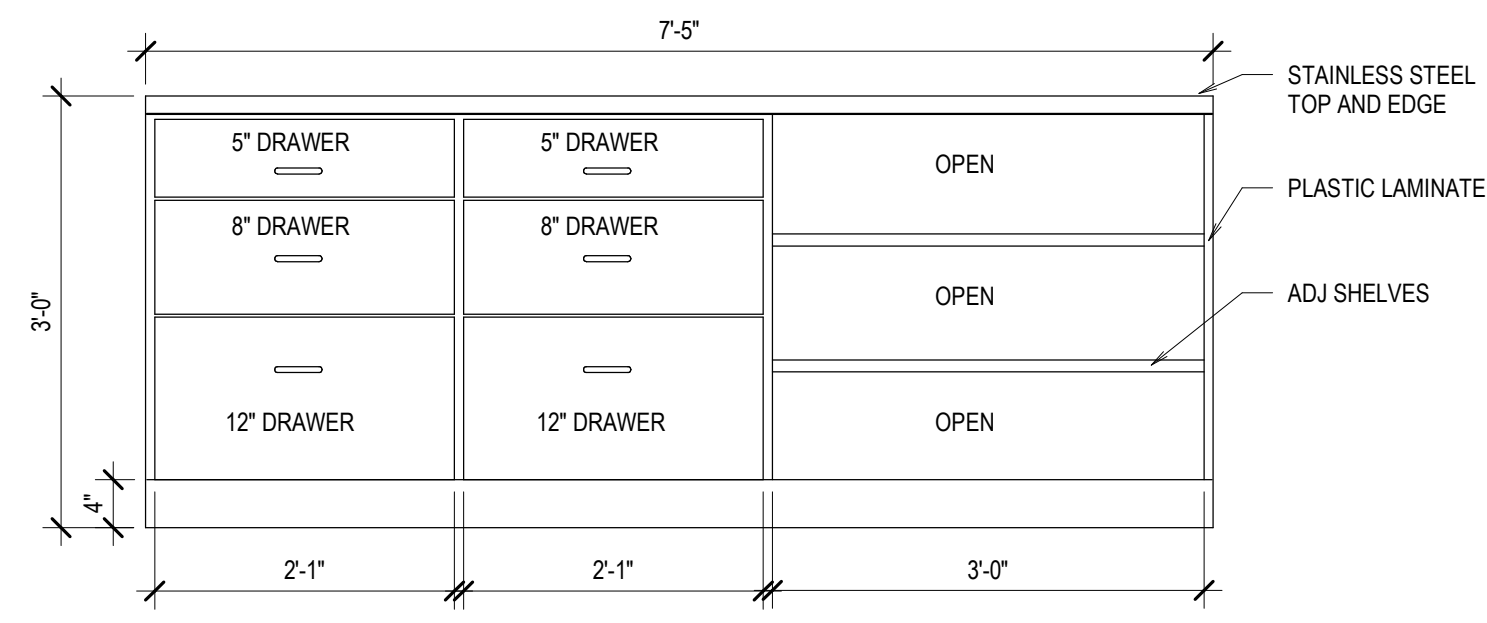


ALL NEW WALLS TO EXTEND TO THE UNDERSIDE OF THE STRUCTURE ABOVE UNLESS NOTED OTHERWISE

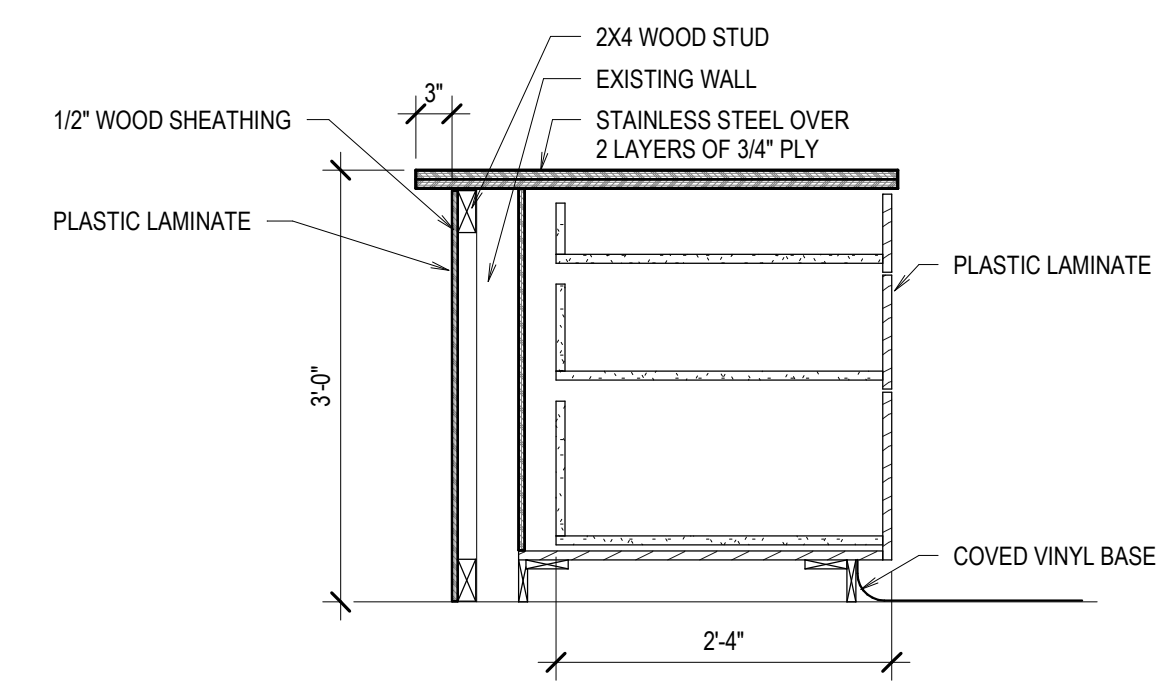
2 WALL TYPES
SCALE: 1 1/2" = 1'-0"



3 MILLWORK PLAN
SCALE: 3/4" = 1'-0"



4 MILLWORK ELEVATION
SCALE: 3/4" = 1'-0"



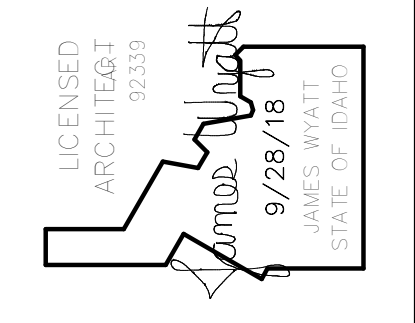
5 MILLWORK SECTION
SCALE: 3/4" = 1'-0"

- KEYNOTES**
- PROVIDE AND INSTALL GRAB BARS PER REQUIRED ANSI MOUNTING HEIGHTS. PROVIDE BLOCKING IN WALL AS REQUIRED. PATCH, PAINT, AND REPAIR WALL AS NECESSARY
 - MOP SINK
 - WIRE SHELVING UNIT - OLYMPIC 10 SHELVES 24" X 48" MODEL: J2448C 4 POSTS 86" TALL MODEL: J86C 10" S" HOOKS MODEL: J9995Z
 - REINSTALL EXISTING CONVECTION OVENS
 - REINSTALL EXISTING STOVE
 - EXISTING REFRIGERATOR
 - CUSTOM SELF-CONTAINED WALK-IN FREEZER
 - WIRE SHELVING UNITS - OLYMPIC 1 SHELF 24" X 60" MODEL: J2460K EPOXY 10 POSTS 86" TALL MODEL: J86K EPOXY 4 SHELVES 24" X 48" MODEL: J2448K EPOXY 4 SHELVES 24" X 36" MODEL: J2436K EPOXY
 - EXISTING HOT WATER HEATER
 - EXISTING WATER SOFTENER
 - DISHWASHER - JACKSON WWS MODEL: TEMPSTAR HH-E VENTLESS
 - THREE COMPARTMENT CORNER SINK - JOHN BOOS MODEL: 3PBCS1620-2D18
 - HAND WASH SINK - KROWNE METAL MODEL: HS-2L
 - PREP SINK - JOHN BOOS MODEL: E1S8-1620-12L18-X
 - EXISTING ICE MAKER
 - EXISTING MIXER
 - FLAT TOP STAINLESS STEEL TABLE 48" X 24" - JOHN BOOS MODEL: FBLG4824-X
 - COOLING RACK - WINHOLT EQUIPMENT MODEL: AL-1820B
 - EXISTING FIRE EXTINGUISHER
 - WALL MOUNTED HANDRAIL
 - EXISTING MEAT SLICER
 - EXISTING MICROWAVE
 - EXISTING WARMER
 - STAINLESS STEEL FILLER TABLE 30" X 15" - JOHN BOOS MODEL: EFT8-3015-X
 - STAINLESS STEEL TABLE 30" X 24" - JOHN BOOS MODEL: FBLG3024-X
 - WIRE SHELVING UNIT - OLYMPIC 5 SHELVES 24" X 36" MODEL: J2436C 4 POSTS 86" TALL MODEL: J86C EPOXY

- KEYNOTES**
- FLAT TOP STAINLESS STEEL TABLE 30" X 18" - JOHN BOOS MODEL: FBLG3018-X
 - MILLWORK
 - PROVIDE NEW WEATHERSTRIPPING AND SWEEPS
 - INFILL THE DOOR OPENING WITH WOOD STUDS AND INSULATION BETWEEN THE STUDS - COVER WITH GYPSUM BOARD
 - WALL TO BE 4'-0" TALL - SEE DETAILS 158/16/3.1
 - FLAT TOP STAINLESS STEEL TABLE 96" X 24" - JOHN BOOS MODEL: FBLG9624-X
 - FLAT TOP STAINLESS STEEL TABLE 72" X 24" - JOHN BOOS MODEL: FBLG7224-X
 - 72" X 12" OVERSHELF - JOHN BOOS MODEL: OS-ES-1272
 - WIRE SHELVING UNITS - OLYMPIC 5 SHELVES 24" X 72" MODEL: J2472C 10 SHELVES 24" X 36" MODEL: J2436C 8 POSTS 86" TALL MODEL: J86C
 - WIRE SHELVING UNIT - OLYMPIC 15 SHELVES 14" X 60" MODEL: J1460C 10 POSTS 86" TALL MODEL: J86C 5 SHELVES 24" X 36" MODEL: J2436C 20" S" HOOKS MODEL: J9995Z
 - REPLACE FAUCETS AND COVER PIPES PER ADA REQUIREMENTS - SEE MECH.
 - CLEAN DISHTABLE 26" X 30" - JOHN BOOS MODEL: EDTC8-S30-R26-X
 - SOILED DISHTABLE 60" X 30" - JOHN BOOS MODEL: JDTS-20-60L-X
 - STAINLESS STEEL WALL CORNER GUARD 2" X 2" - SEE 12/A3.1
 - STAINLESS STEEL COUNTER TOP
 - INSTALL ADA COMPLIANT LEVERS - SEE MECH.
 - STAINLESS STEEL - SEE DETAIL 13/A3.1
 - MOP RACK - MOUNTED 60" ABOVE FINISH FLOOR
 - EXISTING PLUMBING CHASE - FURR AROUND WITH FRP OVER GYPSUM BOARD
 - EXISTING WASTE RECEPTACLE
 - CONCRETE LANDING - 4000 PSI DESIGN MIX - SEE DETAIL 17/A3.1
 - CUT CMU WALL AS REQUIRED TO INSTALL NEW EXHAUST FAN

FINISH SCHEDULE KEY

WALL FINISH		BASE FINISH	
W1	TEXTURED/PAINTED GYP. BOARD	B1	4" SHEET VINYL COVERED
W2	PAINTED CMU	B2	4" COVERED RUBBER
W3	FRP OVER GYP. BOARD UP TO 6'-0" - W1 ABOVE 6'-0"		
W4	FRP OVER CMU UP TO 6'-0" - PAINTED CMU ABOVE 6'-0"	FLOOR FINISH	
W5	FRP OVER CMU	F1	SHEET VINYL
W6	FRP OVER GYP. BOARD	F2	CONCRETE



nbw architects p.a.
ARCHITECTURE / PLANNING / INTERIORS
SCOTT L NELSON A.I.A. KEVIN R BODILY A.I.A. JAMES H WYATT A.I.A.
990 JOHN RIBBS PARKWAY P.O. BOX 2212 - IDHO FALLS, IDHO 83402-2212
(208) 328-8770 (208) 328-8775 (208) 328-8776

REMODEL FOR:
SHELLEY SENIOR CENTER
193 W. PINE ST.
SHELLEY, ID 83274

FLOOR PLAN, WALL TYPES, & MILLWORK

PROJECT:
SHEET TITLE:

REVISIONS

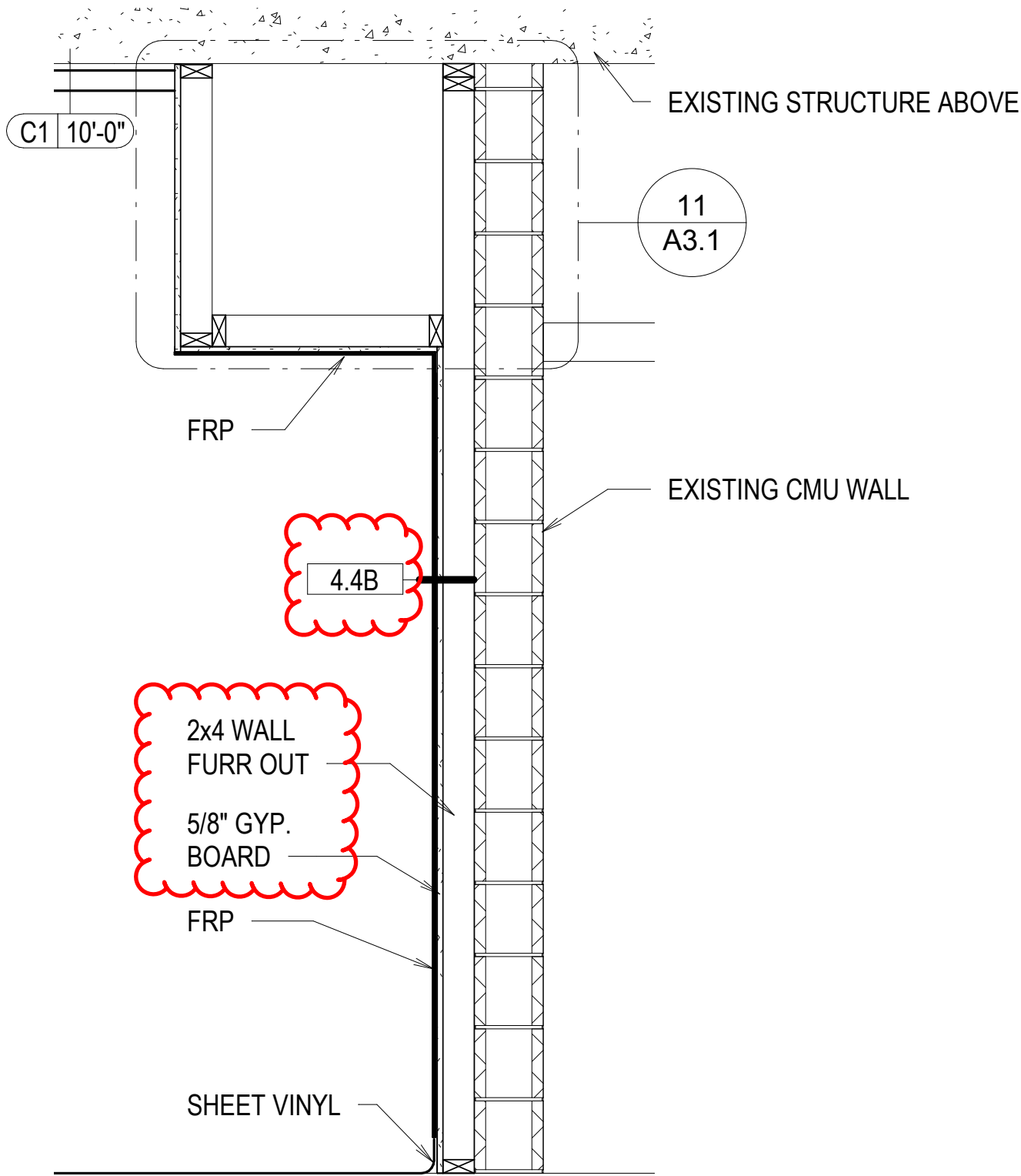
NO.	DESCRIPTION

PROJECT NO. 18023
DATE: OCTOBER 2018
DRAWN BY: NRH
CHECKED BY: JHW

DRAWING NO.: AD#1

A1.1
REVISION 1

REVISED 11/20/18



NOT TO SCALE

PROJECT:
SHELLEY SENIOR CENTER

SHEET TITLE:
SECTION 14/A2.1

nbwarchitects p.c.
ARCHITECTURE / PLANNING / INTERIORS

SCOTT L NIELSON, A.I.A. KEVIN R BODILY, A.I.A. JAMES H WYATT, A.I.A.

990 JOHN ADAMS PARKWAY P.O. BOX 2212 - IDAHO FALLS, IDAHO 83402-2212

(P) 208-522-8779 (F) 208-522-8785 (W) nbwarchitects.com

PROJECT NO.
18023

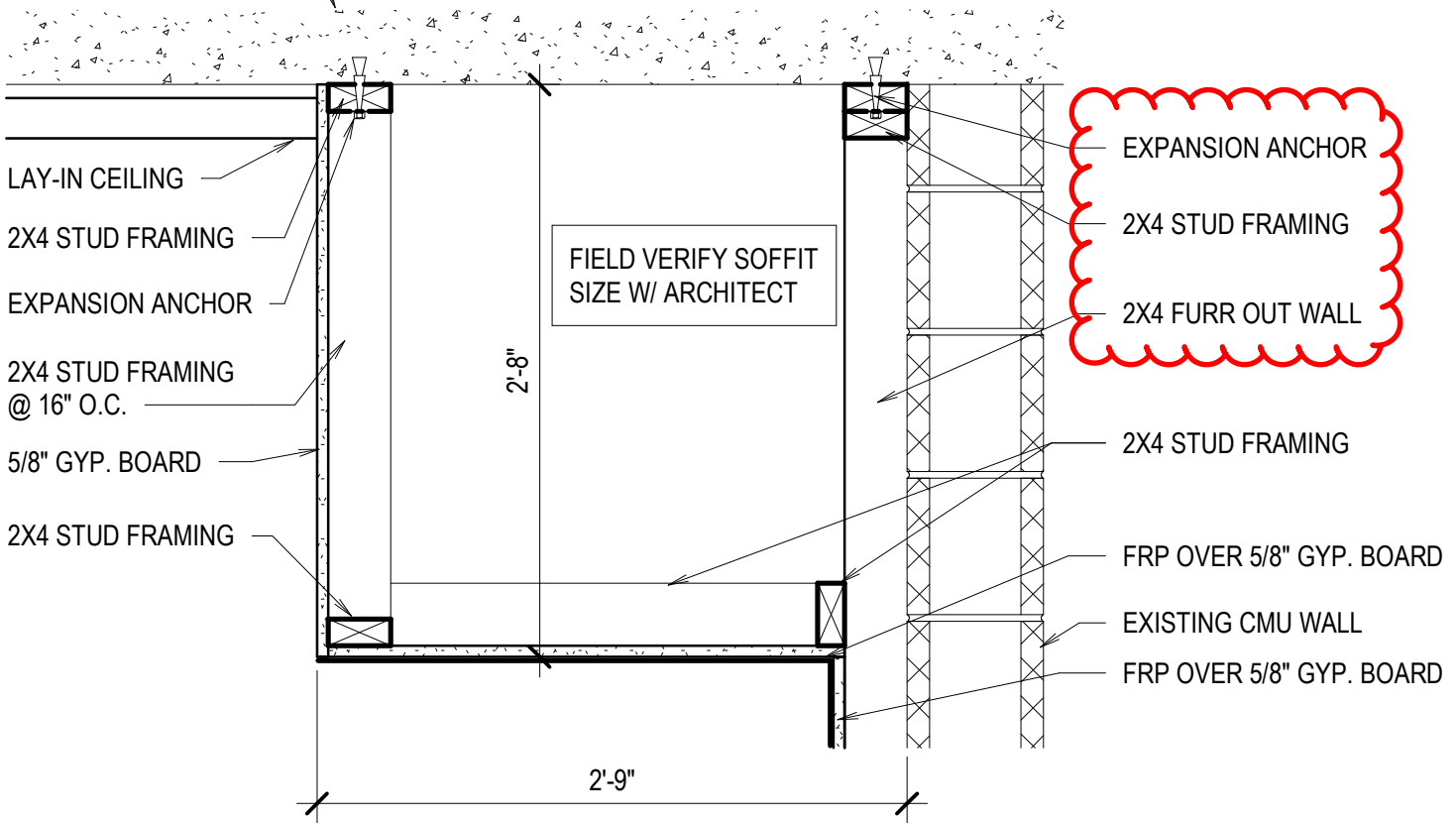
DATE:
11/12/18

DRAWN BY:
NRH

DRAWING NO.:

AD1.1

EXISTING CONCRETE
STRUCTURE



NOT TO SCALE

PROJECT:
SHELLEY SENIOR CENTER

SHEET TITLE:
DETAIL 11/A3.1

nbwarchitects p.c.
ARCHITECTURE / PLANNING / INTERIORS

SCOTT L NIELSON, A.I.A. KEVIN R BODILY, A.I.A. JAMES H WYATT, A.I.A.

990 JOHN ADAMS PARKWAY P.O. BOX 2212 - IDAHO FALLS, IDAHO 83402-2212

(P) 208-522-8779 (F) 208-522-8785 (W) nbwarchitects.com

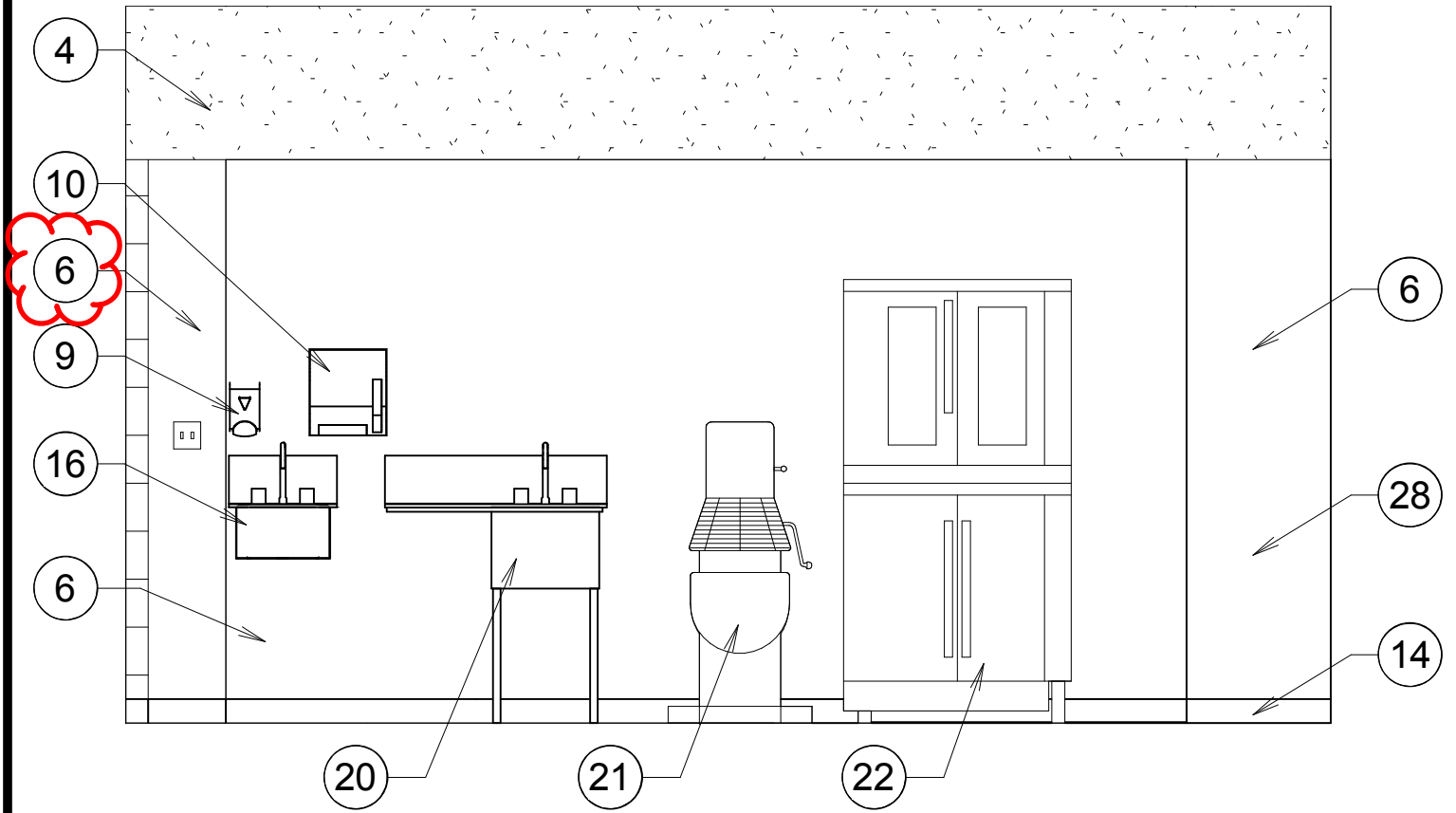
PROJECT NO.
18023

DATE:
11/12/18

DRAWN BY:
NRH

DRAWING NO.:

AD1.2



NOT TO SCALE

PROJECT:
SHELLEY SENIOR CENTER

SHEET TITLE:
ELEVATION 1/A2.1

nbwarchitects p.c.
ARCHITECTURE / PLANNING / INTERIORS

SCOTT L NIELSON, A.I.A. KEVIN R BODILY, A.I.A. JAMES H WYATT, A.I.A.

990 JOHN ADAMS PARKWAY P.O. BOX 2212 - IDAHO FALLS, IDAHO 83402-2212

(P) 208-522-8779 (F) 208-522-8785 (W) nbwarchitects.com

PROJECT NO.
18023

DATE:
11/12/18

DRAWN BY:
NRH

DRAWING NO.:

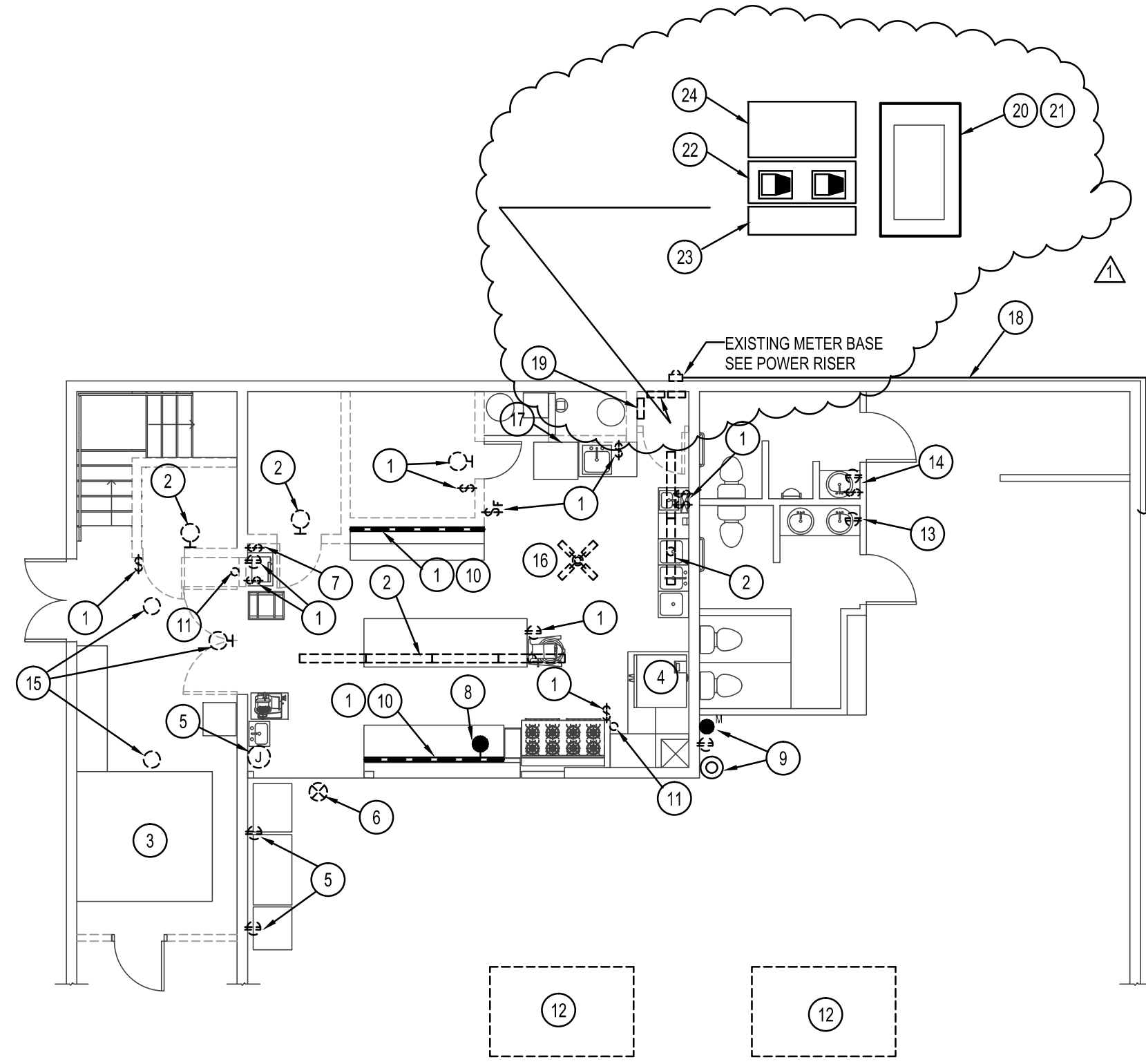
AD1.3

Pre-Bid Conference Sign-in Sheet

Project Name: Shelley Senior Center - 18023

In Attendance:	Company:
1. Joe Lazdauskas	ASI
2. Blake Ford	BFC — 1 set of Plans
3. Chris Clark	CR Clark — 1 set of Plans
4. Rachel Stephenson	Ruteman-Hall
5. Brent Horsley	Horsley Elec. Plans
6. RICH KENNEDY	RIVERS WEST CONST. 1 set Plans
7. Charlie Anderson	Midgley-Huber
8. Ryan Jun	BB-D
9. Eric Waters	B.B-D
10. Shara Hawke	JVS Const. — 1 set of plans
11. MICHAEL PATTON	SICOB
12. James Wyatt	NBW
13. Nick Hansen	NBW
14. Anita	Shelley Senior Center
15. Allen King	Shelley Senior Center
Andrew Carrol	BSR

11/20/2018 3:08:15 PM \\PESERVER\Payne_Engineering_Data\2018\Shelley_Senior_Center - 1859\10_Working_Drawings\1859E1.dwg

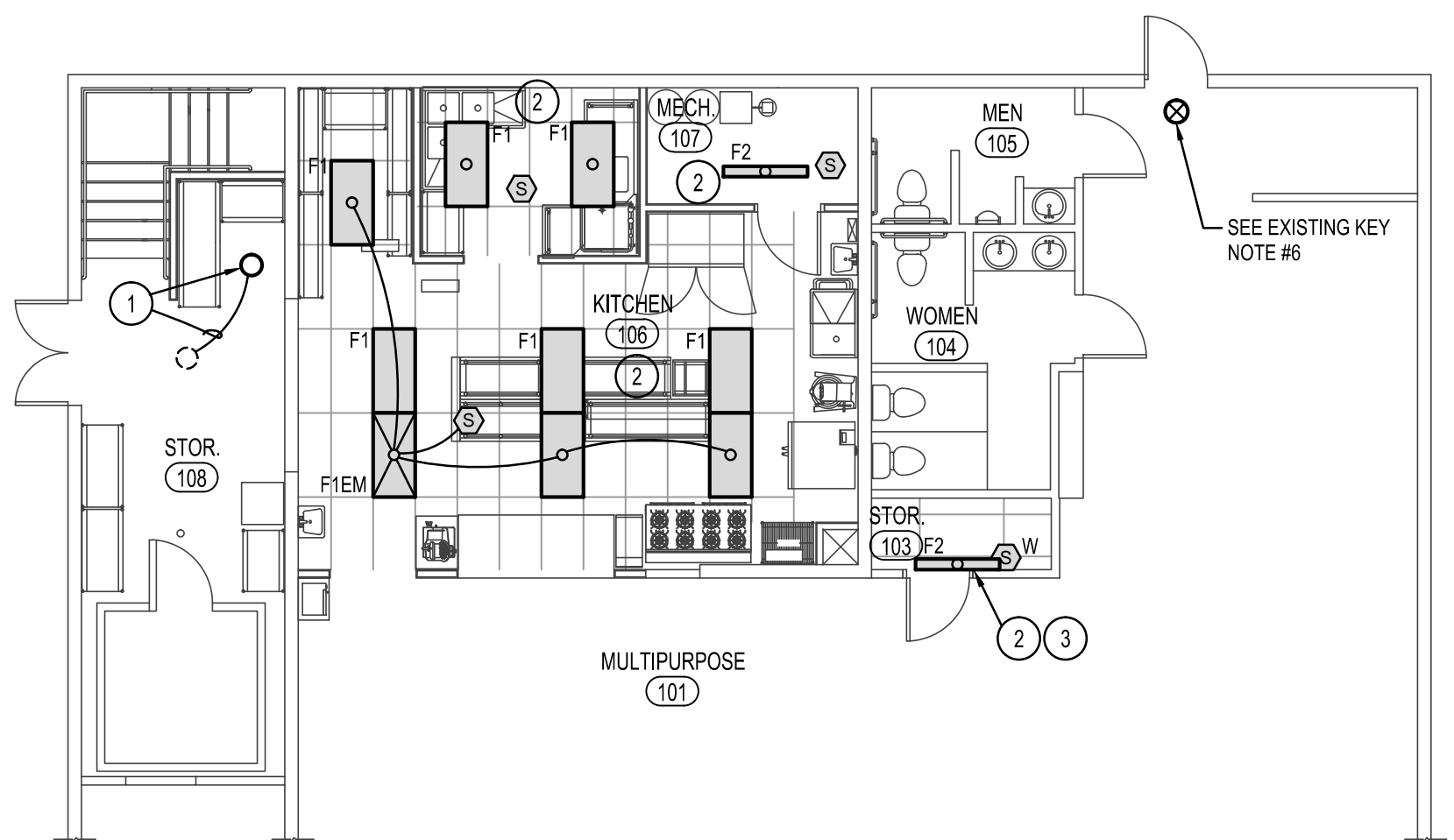


EXISTING ELECTRICAL KEY NOTES

- 1 DISCONNECT AND REMOVE EXISTING DEVICE IN CONFLICT WITH REMODEL. REMOVE ASSOCIATED CONDUIT AND WIRE. MAINTAIN OR REESTABLISH ELECTRICAL CONTINUITY TO DOWNSTREAM DEVICES TO REMAIN.
- 2 DISCONNECT AND REMOVE EXISTING LIGHTING IN CONFLICT WITH REMODEL. MAINTAIN CIRCUIT FOR USE WITH NEW LIGHTING.
- 3 DISCONNECT EXISTING FREEZER. REMOVE ALL ASSOCIATED CONDUIT AND CONDUCTORS BACK TO SOURCE.
- 4 PROTECT OR REESTABLISH ELECTRICAL SERVICE TO EXISTING KITCHEN EQUIPMENT TO REMAIN.
- 5 EXISTING DEVICE TO REMAIN. MAINTAIN OR REESTABLISH ELECTRICAL SERVICE TO THIS DEVICE.
- 6 DISCONNECT AND REMOVE EXISTING EXIT SIGN. REMOVE ALL ASSOCIATED CONDUIT AND WIRE. RELOCATE TO NEW EXIT IN NORTH WALL. CONNECT TO UNSWITCHED LEG OF LIGHTING CIRCUIT.
- 7 DISCONNECT AND REMOVE EXISTING SWITCH AND ASSOCIATED SURFACE RACEWAY.
- 8 EXISTING SPEAKER. CAREFULLY REMOVE AND REINSTALL IN NEW CEILING. EXTEND SPEAKER WIRE AS NECESSARY.
- 9 E.C. SHALL INTERCEPT EXISTING STAND ALONE SMOKE DETECTOR, RECEPTACLE AND MIC JACK. RELOCATE EACH TO NEW WALL OF STORAGE ROOM. EXTEND ALL POWER AND SIGNAL CABLE AND RECONNECT.
- 10 REMOVE EXISTING PLUG STRIP IN CONFLICT WITH REMODEL. REMOVE ALL ASSOCIATED CONDUIT.
- 11 REMOVE EXISTING SURFACE RACEWAY IN CONFLICT WITH REMODEL. RESTORE ELECTRICAL SERVICE TO EXISTING DEVICES TO REMAIN.
- 12 CAREFULLY DISCONNECT EXISTING RTUS FOR REPLACEMENT. RECONNECT NEW UNITS TO EXISTING CIRCUITS.
- 13 REPLACE EXISTING DEVICE AND PLATE WITH NEW GFCI RECEPTACLE.
- 14 REPLACE EXISTING SWITCH AND RECEPTACLE WITH NEW GFCI RECEPTACLE, SWITCH AND PLATE.
- 15 EXISTING LIGHT FIXTURE IN THIS ROOM TO REMAIN. PROTECT DURING CONSTRUCTION. REPLACE EXISTING OCC. SENSOR WITH NEW.
- 16 DISCONNECT AND REMOVE EXISTING PADDLE FAN.
- 17 DISCONNECT AND REMOVE ALL POWER ASSOCIATED WITH EXISTING DISHWASHER.
- 18 E.C. SHALL REWORK EXISTING CIRCUIT TO ACCOMMODATE NEW EXIT DOOR. INTERCEPT, THEN ROUTE UP AND OVER DOOR. FIELD VERIFY SIZE AND CONDITIONS PRIOR TO BID.
- 19 CAREFULLY DISCONNECT EXISTING PANEL FOR REMOVAL OF WING WALL. REINSTALL ON NORTH WALL. SEE SHEET E3.0.
- 20 EXISTING PANEL TO REMAIN.
- 21 PROVIDE AND INSTALL A 60A 2P BREAKER IN EXISTING PANEL FOR EXISTING CONVECTION OVEN.
- 22 REMOVE EXISTING BREAKER BOX. INTERCEPT AND EXTEND EXISTING CIRCUITS TO EXISTING PANEL.
- 23 EXISTING J-BOX TO REMAIN.
- 24 DISCONNECT AND REMOVE EXISTING SPLICE BOX.

LIGHTING KEY NOTES

- 1 PORCELAIN SOCKET WITH LED LAMP. CONNECT TO EXISTING LIGHTING CIRCUIT AND CONTROLS.
- 2 PROVIDE AND INSTALL NEW LIGHTING AND CONTROLS AS SHOWN. CONNECT TO EXISTING LIGHTING CIRCUIT.
- 3 MOUNT ON WALL ABOVE DOOR.



LIGHT FIXTURE SCHEDULE

TYPE	DESCRIPTION	MOUNT	VOLT	LAMPS *	MFGR.	CATALOG #	NOTES
F1	2x4 FLAT PANEL	RECESSED	120/277	INCLUDED	LITHONIA	EPANL 24 40L 40K 80CRI MIN10 2T MVOLT	
F2	LED UTILITY STRIP LIGHT	CEILING	120/277	INCLUDED	LITHONIA	CLXL48-4000LMSEFRDL-MVOLT-GZ10-40K-80CRI-WH	

FIXTURE NOTES:

- 1 CONNECT ALL EXIT AND EMERGENCY LIGHTS TO UNSWITCHED LEG OF EMERGENCY POWER LIGHTING CIRCUIT IN AREA.
- 2 THE SUFFIX "EM" DENOTES A FIXTURE TO BE SUPPLIED WITH AN EMERGENCY BATTERY DRIVER. CONNECT FIXTURES TO OPERATE WITH SURROUNDING FIXTURES UNDER NORMAL OPERATING CONDITIONS.
- 3 EC SHALL COORDINATE ALL FIXTURE TYPES AND FINISHES WITH OWNER PRIOR TO ORDERING.

nbwarchitects p.a.
 ARCHITECTURE / PLANNING / INTERIORS
 SCOTT L. NIELSON, A.I.A., KEVIN R. BODILY, A.I.A., JAMES H. WYATT, A.I.A.
 910 JOHN BOHNS PARKWAY, P.O. BOX 2212 - IDAHO FALLS, IDAHO 83402-2212
 (208) 522-8778 (208) 522-8785 (208) 522-8786

REMODEL FOR:
SHELLEY SENIOR CENTER
 193 W. PINE ST.
 SHELLEY, ID 83274
 ELECTRICAL PLANS

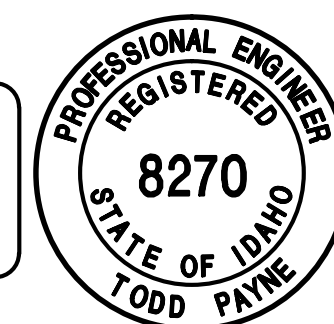
PROJECT:
 SHELLY SENIOR CENTER
 193 W. PINE ST.
 SHELLEY, ID 83274

REVISIONS
 ADDENDUM #1

PROJECT NO.
 18023
 DATE
 OCTOBER 2018
 DRAWN BY:
 mmp
 CHECKED BY:
 tep

DRAWING NO.: AD#1

ORIGINAL SIGNED BY:
 TODD E. PAYNE
 DATED ORIGINAL SIGNED:
 9-25-18
 ON FILE AT:
 PAYNE ENGINEERING INC.



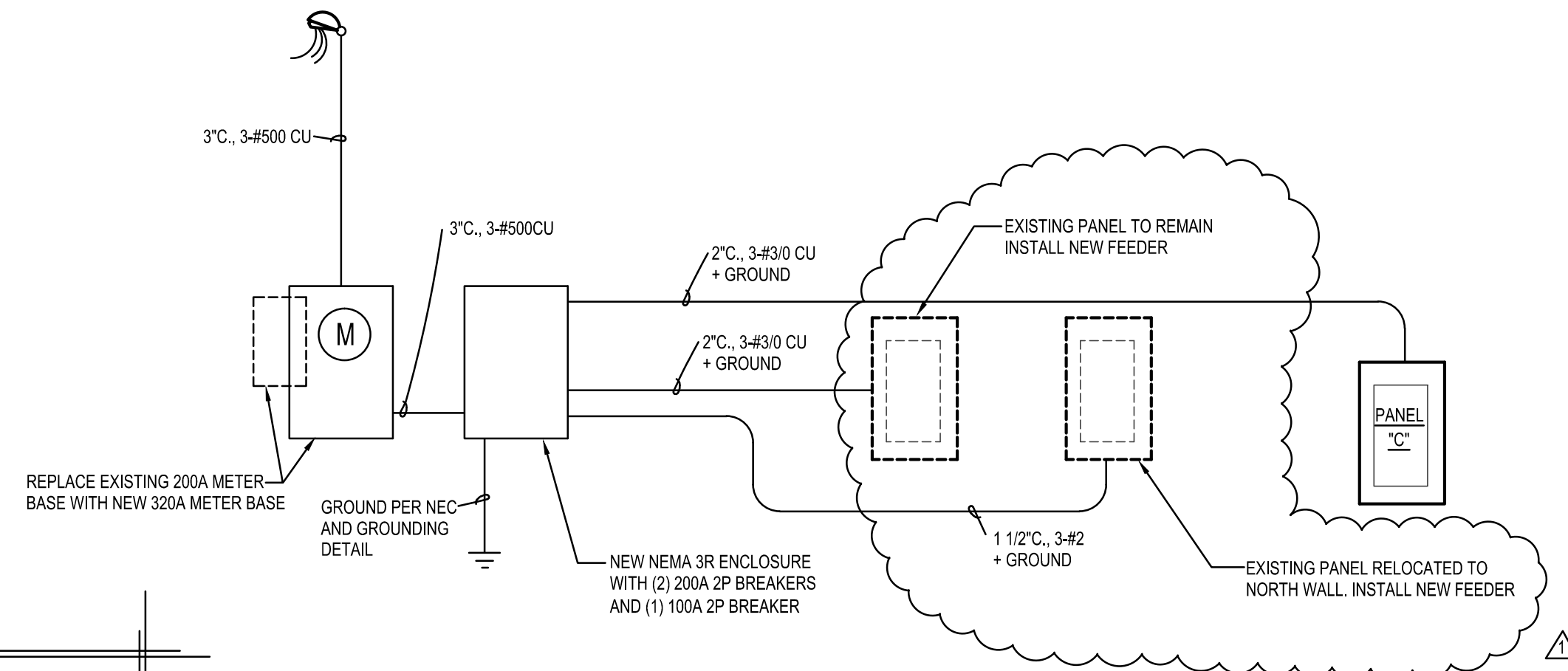
P.E. JOB #1859

REVISED 11/20/18

IPAYNE
 Engineering Inc.
 Consulting Engineers
 1923 E. Center
 Pocatello, Idaho 83201
 tel (208) 232-4439 fax (208) 232-1435

E2.0
 REVISION 1

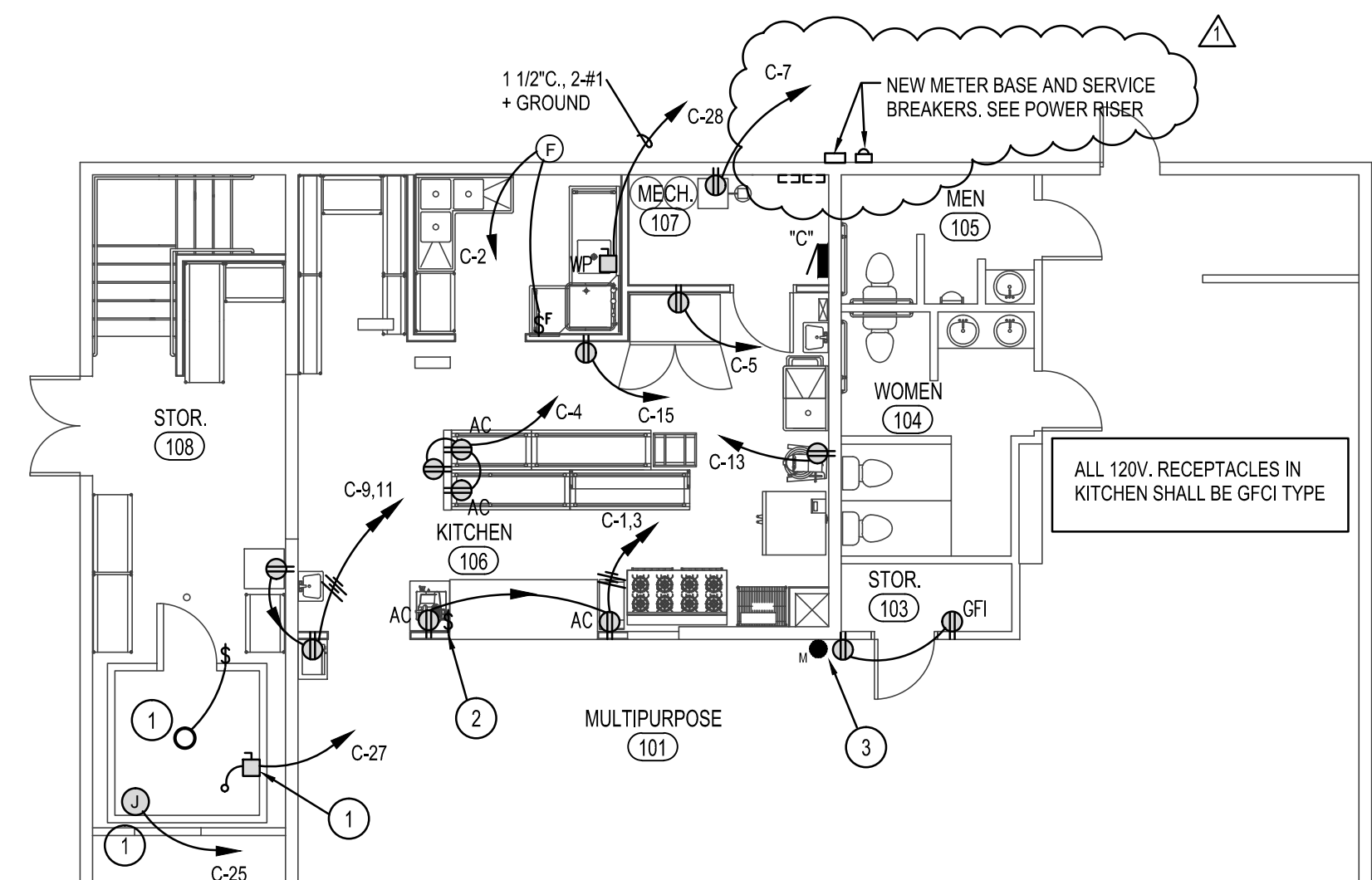
11/20/2018 3:08:20 PM \\PESERVER\Payne_Engineering_Data\2018\Shelley_Senior_Center - 1859\10_Working Drawings\1859E1.dwg



SPECIAL NOTE:
E.C. SHALL MAKE ALL REQUIRED ARRANGEMENTS WITH POWER COMPANY FOR NEW SERVICE. COORDINATE ALL OUTAGES WITH OWNER IN ADVANCE.

POWER RISER DIAGRAM
NO SCALE

SERVICE LOAD CALCULATIONS	
PEAK DEMAND AS REPORTED BY POWER COMPANY	= 27 KW
27KW x 1.25	= 6.75 KW
ADDED LOAD	= 32.5 KW
TOTAL	66.25 KW
SERVICE SIZE	
66.25 KW @ 120/240 1Ø 3W	= 276 AMPS
RECOMMENDED SERVICE SIZE	= 320A METER



POWER KEY NOTES

- E.C. SHALL MAKE ALL REQUIRED CONNECTIONS TO NEW FREEZER, INCLUDING OUTDOOR CONDENSER AND INDOOR FAN COIL. PROVIDE AND INSTALL 120V, 20A CIRCUIT FOR LIGHT FIXTURE. INSTALL HEAT TRACE ON CONDENSATE LINE. COORDINATE WITH FREEZER SUPPLIER.
- PROVIDE AND INSTALL A NEW TOGGLE SWITCH FOR HOOD FAN CONTROL. LOCATE ADJACENT TO ANSUL SYSTEM PULL STATION. RECONNECT TO CONTROL HOOD FAN.
- SEE EXISTING PLAN FOR WORK WITH MIC JACK, SMOKE DETECTOR AND OUTLET.

PANEL "C"											
CLASS 120/240V 1Ø		MAIN BRKR. _____ AMPS		FEED BOTTOM		SURFACE					
LOCATION _____		MAIN LUGS ONLY 200		FEED TOP		FLUSH					
MAKE/MODEL _____		MAIN SW. _____ AMPS		DIMENSIONS 20\"/>							
LOAD NAME	CIR NO	LOAD WATTS	BRK AMP	LOAD/POLE	POLE	BRK AMP	LOAD WATTS	CIR NO	LOAD NAME		
RECEPTACLES	1	1000	20	1	1500	1	500	2	EXHAUST FAN		
	3	1000			1000			4	SPARE		
	5	1000			1000			6			
	7	1000			1000			8			
	9	1000			1000			10			
	11	1000			1000			12	PREPARED SPACE		
	13	1000			1000			14			
	15	1000			1000			16			
SPARE	17							18			
	19							20			
	21							22			
	23							24			
FREEZER	25	1000			1000			26			
NEW FREEZER	27	1500	20	2	11500	2	110	28	DISH WASHER		
	29	1500			11500		10000	30			
	31							32			
	33							34			
	35							36			
	37							38			
	39							40			
	41							42			
TOTAL LOAD/PHASE		WATTS 17000 15500		S.C. INT CAP/BKR. TO BE DETERMINED		AMPS.					
FEEDER CONDUCTOR SIZE: SEE RISER		AMPS 141 129		CONDUIT SIZE SEE RISER							
REMARKS:											

nbwarchitects p.a.
ARCHITECTURE / PLANNING / INTERIORS
SCOTT L. NIELSON, A.I.A. KEVIN R. BODILY, A.I.A. JAMES H. WYATT, A.I.A.
910 JONES PARKWAY, P.O. BOX 2212 - IDAHO FALLS, IDAHO 83402-2212
(208) 522-8775 (208) 522-8785 (208) 522-8785

REMODEL FOR:
SHELLEY SENIOR CENTER
193 W. PINE ST.
SHELLEY, ID 83274

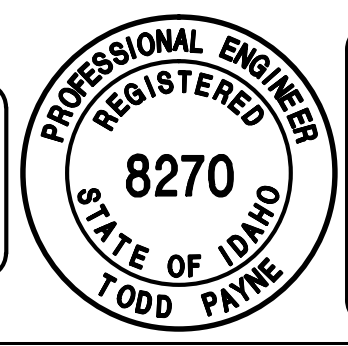
PROJECT:
SHEET TITLE:
ELECTRICAL PLAN AND POWER RISER

REVISIONS
ADDENDUM #1

PROJECT NO. 18023
DATE OCTOBER 2018
DRAWN BY: mmp
CHECKED BY: tep

DRAWING NO.: AD#1

ORIGINAL SIGNED BY:
TODD E. PAYNE
DATED ORIGINAL SIGNED:
9-25-18
ON FILE AT:
PAYNE ENGINEERING INC.



P.E. JOB #1859 REVISED 11/20/18
IPAYNE Engineering Inc.
Consulting Engineers
1823 E. Center
Pocatello, Idaho 83201
tel (208) 232-4439 fax (208) 232-1435

E3.0
REVISION 1