

ADDENDUM #1

Date: October 20, 2017

This Addendum applicable to work designated herein shall be understood to be and is an Addendum and as such shall be part of and included in the Contract.

To all bidders for furnishing all labor and materials necessary for:

**KENWORTH SALES COMPANY, INC.
ONTARIO, OREGON
NEW BUILDING ADDITION**

Failure to acknowledge receipt of this Addendum on the bid proposal form may result in rejection of your bid.

Addendum consists of: 2 pages. Attached Documents consist of: Bid Modification Form, Sheets AD1.0, AD1.1, M1.1

GENERAL ITEMS

1. **Bid Opening Date:** November 8, 2017
Time: 2:00 p.m.
Location: NBW Architect's Office (remote bid opening)
990 John Adams, Pkwy
Idaho Falls, Idaho 83401
2. Bid Submittal: As set forth in discussion at the Pre-Bid Meeting, the Contractor shall submit its Bid to the Architect, at the location listed above, prior to the Bid Date and Time stipulated above. This shall be an original Bid Form with original signatures, seal where applies, and with all information properly provided on the form. Since this form is to be original, it cannot be faxed or e-mailed but must be delivered via regular mail or courier service. The attached Bid Modification form may be faxed or e-mailed (see above) to the Architect's office prior to the time set forth above. Bid Modifications not received prior to that time will not be considered. It is the Contractor's sole responsibility to verify that the original Bid Form and the Bid Modification Form have been delivered to and received by the Architect's office prior to the appointed time.
3. Plan review fee has been paid by the Owner. General building permit fee will be paid for by the Owner.
4. The contract period shall be 210 calendar days in lieu of 180 days as noted in the documents.
5. General contractor is responsible for temporary heat, cover and winter condition costs. The 210 calendar day completion time allows for a 60 day project close down during winter if required.
6. A Geotechnical Investigation Report has been posted to NBW Architects website at nbwarchitects.com for your convenience and reference.

GENERAL ITEMS

1. Connect the 3/4" cold water line to the existing 1/2" (or larger) cold water line at the ceiling near the existing sink and run in ceiling space as shown to new addition. Core drill through existing concrete block walls as required to run new line. Remove and replace ceiling materials as required to install new water line.

ARCHITECTURAL ITEMS

1. Sheets SD1.1 and A1.1 - the fire hydrant location is incorrectly shown on these sheets - see sheet C1 for correct fire hydrant location.
2. Sheet A1.1 - see attached AD1.0 for revised location of door 102C.
3. Sheet A5.1 Detail 11 - replaced by attached AD1.1. See also C4 Detail 11.

MECHANICAL ITEMS

1. Sheet M1.1 has been replaced - see attached.

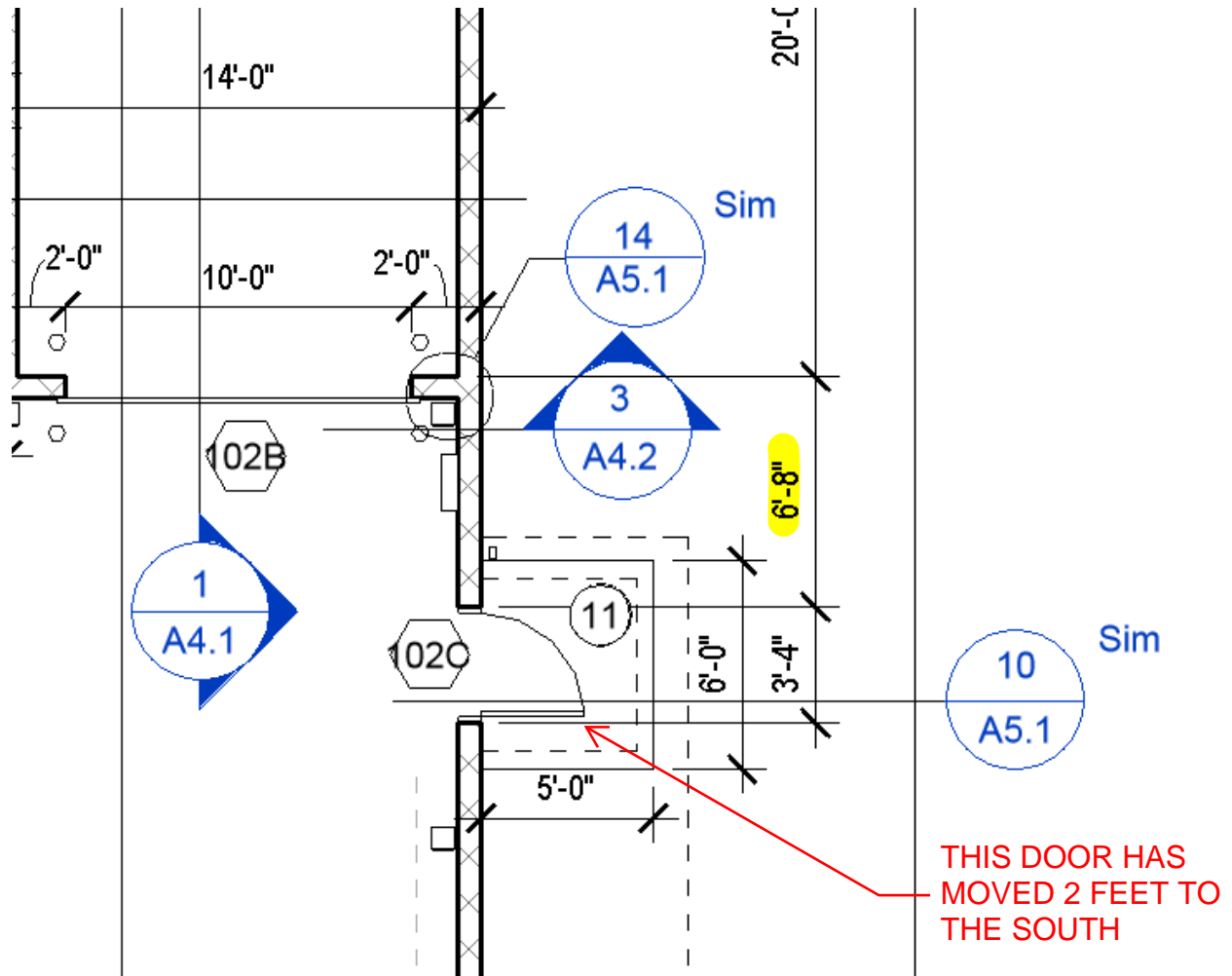
CIVIL ITEMS

1. Sheet C2 - see Sheet SD1.1 and Detail 9 A5.1 for information regarding the concrete curb detail at the edge of the asphalt.
2. Sheets C1 and C2 - see sheets SD1.1 and A1.1 for removeable bollard locations - see Detail 5 A5.1 for removeable bollard detail.

STRUCTURAL ITEMS

1. Sheet S2.0 - Foundation Plan - Eliminate door opening in CMU wall just west of Connector 101
2. Sheet S2.0 - Roof Framing Plan - Each of the four trusses supporting the evaporative coolers EC1 & EC2 shall be designed for an additional adload of 500 lbs. Coordinate with mechanical drawings for location of evaporative coolers.

END OF ADDENDUM NO.1



PROJECT:
Kenworth Ontario

SHEET TITLE:
Door 102C Revised Location

nbwarchitects p.a.
ARCHITECTURE / PLANNING / INTERIORS

SCOTT L NIELSON, A.I.A. KEVIN R BODILY, A.I.A. JAMES H WYATT, A.I.A.

990 JOHN ADAMS PARKWAY P.O. BOX 2212 - IDAHO FALLS, IDAHO 83402-2212

(P) 208-522-8779 (F) 208-522-8785 (W) nbwarchitects.com

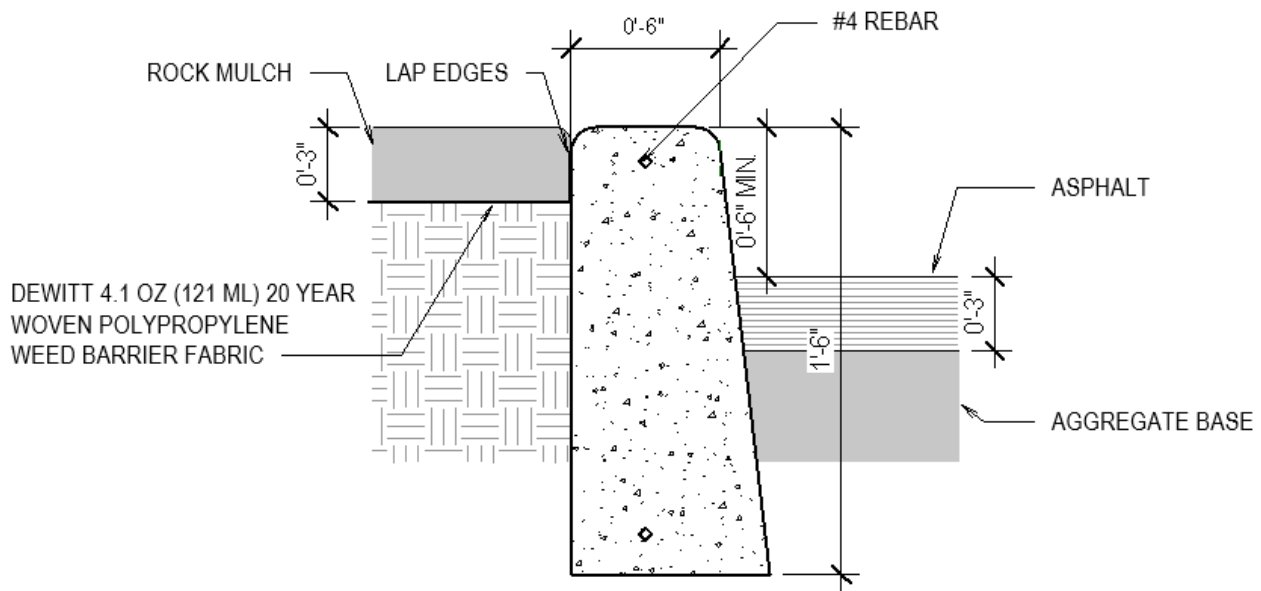
PROJECT NO.
17046

DATE:
10/20/17

DRAWN BY:
NRH

DRAWING NO.:

AD1.0



PROJECT:
Kenworth Ontario

SHEET TITLE:
Updated Curb Detail

nbwarchitects p.a.
ARCHITECTURE / PLANNING / INTERIORS

SCOTT L NIELSON, A.I.A. KEVIN R BODILY, A.I.A. JAMES H WYATT, A.I.A

990 JOHN ADAMS PARKWAY P.O. BOX 2212 - IDAHO FALLS, IDAHO 83402-2212

(P) 208-522-8779 (F) 208-522-8785 (W) nbwarchitects.com

PROJECT NO.
17046

DATE:
10/20/17

DRAWN BY:
NRH

DRAWING NO.:

AD1.1

BID MODIFICATION

**KENWORTH SALES – ONTARIO, OREGON
NEW BUILDING ADDITION**

Company Name: _____

Further to our submission on our **BID FORM** FOR GENERAL CONTRACT WORK

To the amount listed in “**Base Proposal**” please modify our bid by:

Adding _____ (\$ _____)

Or

Deleting _____ (\$ _____)

From/to the amount listed.

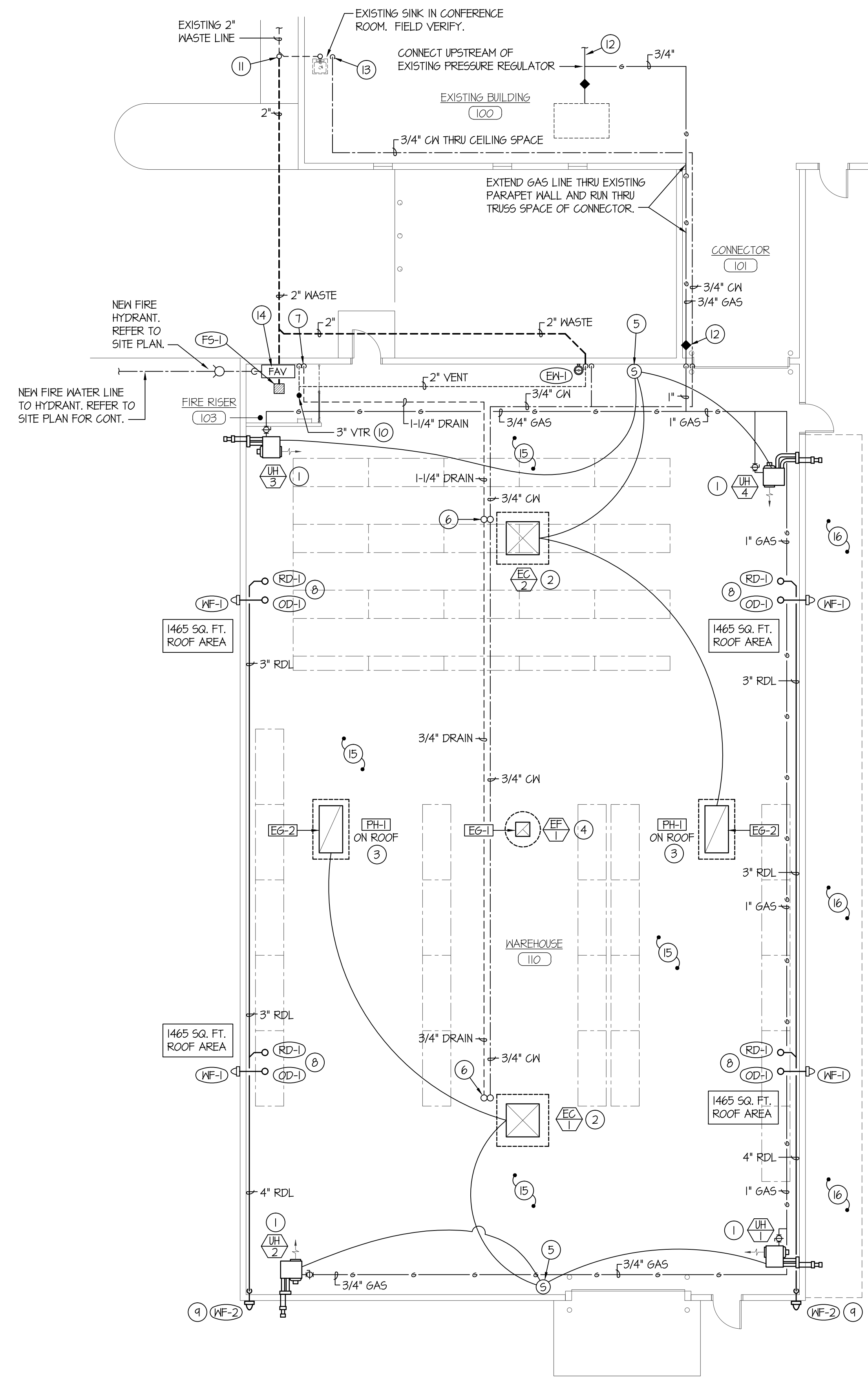
Signed by _____

Date and Time _____

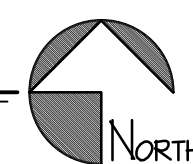
Addenda Acknowledged: _____

(Acknowledge All Addenda)

10/19/2017 11:51:33 AM F:\17\7082 Kenworth Ontario\17082-M1.dwg



FLOOR PLAN - MECHANICAL
SCALE: 1/8" = 1'-0"



FIXTURE SCHEDULE					
SYM.	DESCRIPTION	HOT	COLD	WASTE	VENT
EW-1	EYE WASH STATION - HAYS T260BT WITH PUSH-OPEN BALL VALVE, EYEWASH BOWL, 1/2" SUPPLY LINE AND 1-1/2" WASTE LINE WITH P-TRAP.	---	1/2"	1-1/2"	1-1/2"
FS-1	FLOOR SINK - ZURN Z1900 WITH 3/4" GRATE, WHITE ENAMEL FINISH, DOME STRAINER, AND 2" DEEP SEAL P-TRAP.	---	---	2"	2"
OD-1	OVER-FLOW DRAIN - JAY R. SMITH MODEL 1780 WITH RECEIVER, 2" HIGH WATER DAM, UNDERDECK CLAMP, GRAVEL STOP, DOME STRAINER, AND 3" DRAIN LINE CONNECTION.	---	---	3"	---
RD-1	ROOF DRAIN - JAY R. SMITH MODEL 1010 WITH RECEIVER, UNDERDECK CLAMP, GRAVEL STOP, DOME STRAINER, AND 3" DRAIN LINE CONNECTION.	---	---	3"	---
WF-1	WALL FLANGE - JAY R. SMITH MODEL 1710 WITH ROUGH BRONZE CONSTRUCTION, WALL FLANGE, AND 3" DRAIN LINE CONNECTION.	---	---	3"	---
WF-2	WALL FLANGE - JAY R. SMITH MODEL 1710 WITH ROUGH BRONZE CONSTRUCTION, WALL FLANGE, AND 4" DRAIN LINE CONNECTION.	---	---	4"	---

EVAPORATIVE COOLER SCHEDULE											
SYM.	TYPE	NOMINAL CFM	ACTUAL CFM	H.P.	CHAR.	SP	DB	WB	WATER CONNECT	WEIGHT	REMARKS
EC-1	DOWN DISCHARGE	12,000	6,000	1/2	208/60/1	0.2'	95°F	65°F	1/2"	1000#	UNITED METAL PRODUCTS UMF-T24XL WITH BELT DRIVE FAN, WATER PUMP AND FLENUM DIFFUSER BELOW ROOF.
EC-2	DOWN DISCHARGE	12,000	6,000	1/2	208/60/1	0.2'	95°F	65°F	1/2"	1000#	UNITED METAL PRODUCTS UMF-T24XL WITH BELT DRIVE FAN, WATER PUMP AND FLENUM DIFFUSER BELOW ROOF.

EXHAUST FAN SCHEDULE								
SYM.	TYPE	C.F.M.	S.P.E.	H.P.	CHAR.	R.P.M.	CONTROL	REMARKS
EF-1	ROOF-TOP CENTRIFUGAL	500	.25"	1/4	120/60/1	800	WALL SWITCH	TWIN CITY MODEL 100C-BCRD WITH BACK-DRAFT DAMPER AND SLEEVE THRU ROOF.

UNIT HEATER SCHEDULE													
SYM.	TYPE	CFM	H.P.	CHAR.	A.G.A.		EAT	LAT	SUP.	FUEL TYPE	FLUE	WEIGHT	REMARKS
					INPUT	OUTPUT							
UH-1	PROPELLER	710	1/30	120/60/1	60,000	44,800	65°F	100°F	1/2"	NAT.	(2) 4"	100#	REZINOR UDA5-60 SEPARATED COMBUSTION UNIT WITH WALL MOUNTED SENSOR
UH-2	PROPELLER	710	1/30	120/60/1	60,000	44,800	65°F	100°F	1/2"	NAT.	(2) 4"	100#	REZINOR UDA5-60 SEPARATED COMBUSTION UNIT WITH WALL MOUNTED SENSOR
UH-3	PROPELLER	710	1/30	120/60/1	60,000	44,800	65°F	100°F	1/2"	NAT.	(2) 4"	100#	REZINOR UDA5-60 SEPARATED COMBUSTION UNIT WITH WALL MOUNTED SENSOR
UH-4	PROPELLER	710	1/30	120/60/1	60,000	44,800	65°F	100°F	1/2"	NAT.	(2) 4"	100#	REZINOR UDA5-60 SEPARATED COMBUSTION UNIT WITH WALL MOUNTED SENSOR

GRILLE AND REGISTER SCHEDULE									
SYM.	SIZE	THROW	CFM	CONSTR.	FINISH	BRANCH DUCT	F.D.	M.D.	REMARKS
EG-1	14 x 14	---	500	STEEL	WHITE	14 x 14	NO	NO	PRICE 535
EG-2	48 x 60	---	12,000	STEEL	WHITE	48 x 60	NO	NO	PRICE 5355
PH-1	48x60Lx30H	---	12,000	ALUM	ANODIZED	48x60	NO	YES	PENNBARRY MODEL PH 'PENHOUSE' WITH BIRD SCREEN. MOUNT ON ROOF CURB. PROVIDE MOTORIZED DAMPER.

PLAN NOTES:

- PROVIDE AND INSTALL UNIT HEATER AS SPECIFIED. MOUNT UNIT AS HIGH AS POSSIBLE AND SUPPORT FROM ROOF STRUCTURE. EXTEND VENTS THRU WALL WITH CONCENTRIC TYPE FITTING. REFER TO DETAIL A/M1.2 FOR TYPICAL INSTALLATION. LOCATE UNITS NEAR WALL. COORDINATE ACTUAL LOCATION WITH HIGH-PILE STORAGE RACKS. CONNECT UNIT HEATER TO 3/4" GAS LINE WITH SHUT-OFF VALVE AND FLEXIBLE HOSE. REFER TO DETAIL N/M1.2 FOR TYPICAL GAS LINE CONNECTION.
- PROVIDE AND INSTALL EVAPORATIVE COOLER AS SPECIFIED. MOUNT UNITS ON ROOF WITH ROOF CURB. DROP DUCT DOWN THRU ROOF WITH PLENUM TYPE DIFFUSER AT 12" BELOW ROOF. REFER TO DETAIL K/M1.2 FOR TYPICAL PLENUM DIFFUSER INSTALLATION. INTERLOCK UNIT WITH WALL MOUNTED SENSOR AND PH-1 ON ROOF AS SHOWN.
- PROVIDE AND INSTALL RELIEF AIR PENTHOUSE AS SPECIFIED ON ROOF WITH ROOF CURB. EXTEND FULL SIZE DUCT DOWN THRU ROOF AND PROVIDE MOTORIZED DAMPER IN DUCT. INTERLOCK DAMPER WITH CORRESPONDING EVAPORATIVE COOLER. REFER TO DETAIL B/M1.2 FOR TYPICAL INSTALLATION.
- PROVIDE AND INSTALL ROOF MOUNTED EXHAUST FAN AS SPECIFIED. MOUNT ON ROOF CURB AND DROP DUCT DOWN THRU ROOF TO EXHAUST GRILLES AS SHOWN. MOUNT GRILLES AT BOTTOM CHORD OF ROOF TRUSSES. REFER TO DETAIL G/M1.2 FOR TYPICAL INSTALLATION.
- MOUNT TEMPERATURE SENSOR OR THERMOSTAT ON WALL AT 5'-0" ABOVE FLOOR. CONNECT TO CORRESPONDING EQUIPMENT AS SHOWN.
- RISE 3/4" COLD WATER LINE AND 3/4" DRAIN LINE UP THRU ROOF AND CONNECT TO EVAPORATIVE COOLER. PROVIDE SHUT-OFF VALVE BELOW ROOF FOR COLD WATER LINE.
- DROP 1-1/4" DRAIN LINE FROM EVAPORATIVE COOLERS DOWN WALL AND EXTEND OUT TO FLOOR SINK. COORDINATE DRAIN LINE LOCATION WITH OTHER PIPING AND FIRE RISER.
- TYPICAL ROOF DRAIN AND OVER-FLOW DRAIN. REFER TO DETAIL E/M1.2 FOR TYPICAL INSTALLATION. GRADE LINES DOWN AT 1/8" SLOPE PER FOOT IN DIRECTION OF FLOW. EXTEND OVER-FLOW DRAIN LINE OUT THRU EXTERIOR WALL AND KEEP AS HIGH AS POSSIBLE. PROVIDE WALL FLANGE AT TERMINATION.
- DROP 4" ROOF DRAIN LINE DOWN IN CORNER AND EXTEND THRU WALL AT 12" ABOVE FLOOR. PROVIDE WALL FLANGE AT TERMINATION.
- RISE 2" VENT LINE UP WALL TO ROOF. OFFSET PIPING AS REQUIRED AND RISE 3" VENT UP THRU ROOF AT 3'-0" MINIMUM AWAY FROM ROOF EDGE.
- CONNECT NEW 2" WASTE LINE TO EXISTING 2" (OR LARGER) WASTE LINE FROM EXISTING SINK IN CONFERENCE ROOM. CONTRACTOR TO FIELD VERIFY EXACT LOCATION OF EXISTING CLEAN OUT AND DEPTH OF EXISTING WASTE PIPING. CONNECT NEW TO EXISTING AND KEEP AS LOW AS POSSIBLE. GRADE AT 1/4" PER FOOT BACK TO FLOOR SINK IN NEW WAREHOUSE.
- CONNECT 3/4" (2 PSI) GAS LINE TO EXISTING 3/4" (OR LARGER) GAS PIPING ON ROOF OF EXISTING BUILDING. CONTRACTOR TO FIELD VERIFY EXACT SIZE AND LOCATION OF EXISTING GAS PIPING ON ROOF. RUN NEW PIPING ON ROOF OF EXISTING BUILDING AND NEW CONNECTOR. PROVIDE SHUT-OFF VALVE AND PRESSURE REGULATOR ON ROOF OF CONNECTOR. EXTEND LOW PRESSURE GAS LINE THRU WALL AND RISE UP TO ROOF LEVEL OF WAREHOUSE. RUN TO EQUIPMENT AS SHOWN.
- CONNECT 3/4" COLD WATER LINE TO EXISTING 1/2" (OR LARGER) COLD WATER LINE NEAR EXISTING SINK. RISE WATER LINE UP AND RUN IN CEILING SPACE AS SHOWN TO NEW ADDITION.
- NEW FIRE RISER AND ALARM VALVE. REFER TO DETAIL L/M1.2 FOR TYPICAL INSTALLATION.
- NEW ADDITION TO BE FIRE SPRINKLED. PROVIDE SPRINKLER HEADS AND PIPING AS REQUIRED TO MEET NFPA-13 CODE REQUIREMENTS. FIELD VERIFY LOCATIONS OF OTHER PIPING, DUCTWORK, ELECTRICAL CONDUITS, AND BUILDING STRUCTURE. COORDINATE LOCATION OF FIRE SPRINKLER PIPING WITH HEADS OF OTHER TRADES. PROVIDE 'IN-RACK' AND/OR HIGH PILE FIRE SPRINKLER SYSTEM AS REQUIRED IN PARTS OF WAREHOUSE. REFER TO ARCHITECTURAL DRAWINGS FOR RACK SYSTEM LAYOUT.
- CANOPY TO BE FIRE SPRINKLED. PROVIDE DRY SPRINKLER HEADS AND PIPING AS REQUIRED TO MEET NFPA-13 CODE REQUIREMENTS. FIELD VERIFY LOCATIONS OF OTHER PIPING, DUCTWORK, ELECTRICAL CONDUITS, AND BUILDING STRUCTURE. COORDINATE LOCATION OF FIRE SPRINKLER PIPING WITH HEADS OF OTHER TRADES.

nbw architects p.a.
ARCHITECTURE PLANNING INTERIORS
SCOTT NELSON, AIA, KEVIN BODDY, AIA, JAMES H. WYATT, AIA.

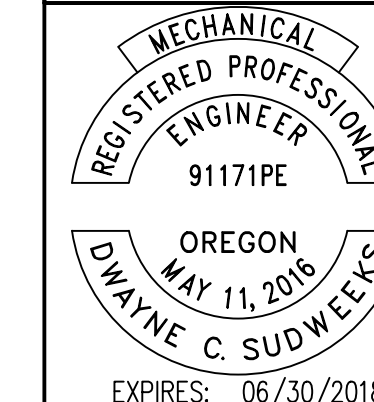
KENWORTH SALES COMPANY INC.
920 SE 9TH AVE
ONTARIO OREGON 97914

PROJECT:

REVISIONS

PROJECT NO. 17046
DATE: OCT. 2017
DRAWN BY: M JENSEN
CHECKED BY: D SUDWEEKS

DRAWING NO. AD#1



Engineered Systems Associates
1355 EAST CENTER
POCATELLO, IDAHO 83201
PHONE: (208) 233-0501
FAX: (208) 233-0529
EMAIL: esa@engsystems.com
ESA JOB NUMBER: 17062

M1.1
Revised-1

MECHANICAL PLAN AND SCHEDULES

SHEET TITLE:

AD#1